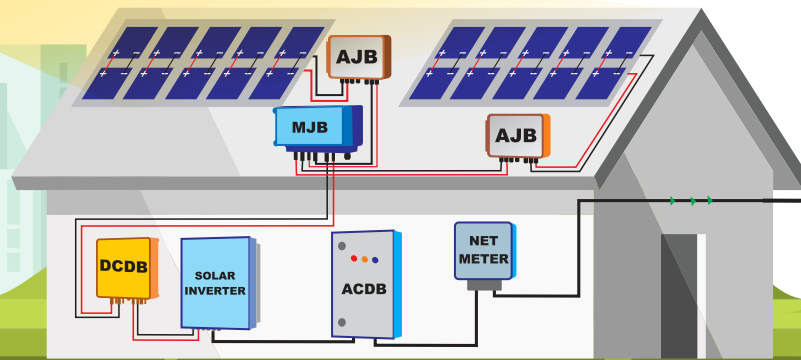




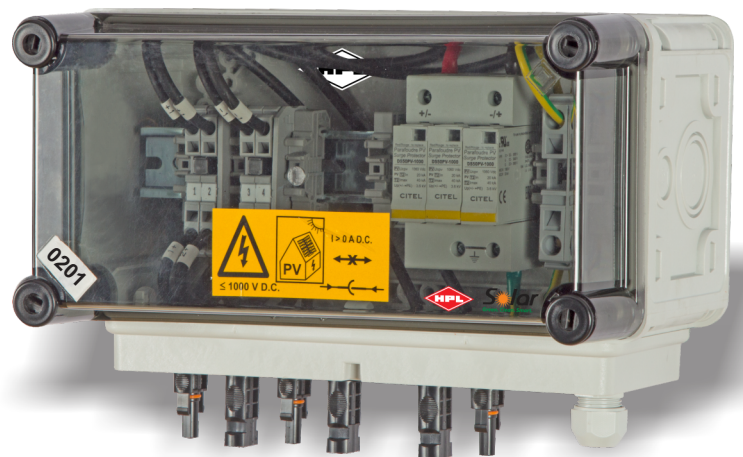
**Solar**  
Green. Smart. Durable



MNRE approved channel partner

## Solar MJB Main Junction Box

- Main Junction Box is used to combine output from several Array Junction Boxes and connect it to DC Distribution Box OR to Power Conditioning Unit/ Solar inverter.
- The MJB consists of two sections.
  - One to combine all the positive terminals.
  - Second to combine the negative terminals on the other side
- Tested under strict industry norms by experts to guarantee flawless functioning and durability.
- HPL Main Junction Boxes are made from high quality Thermoplastic (ABS) with the use of latest technology and is suitable for a range of Solar Power applications such as standalone rooftop systems, Hybrid systems etc.
- HPL Main Junction Boxes are dust, vermin and waterproof.
- Fitted with cable glands of appropriate sizes for both incoming and outgoing cables.

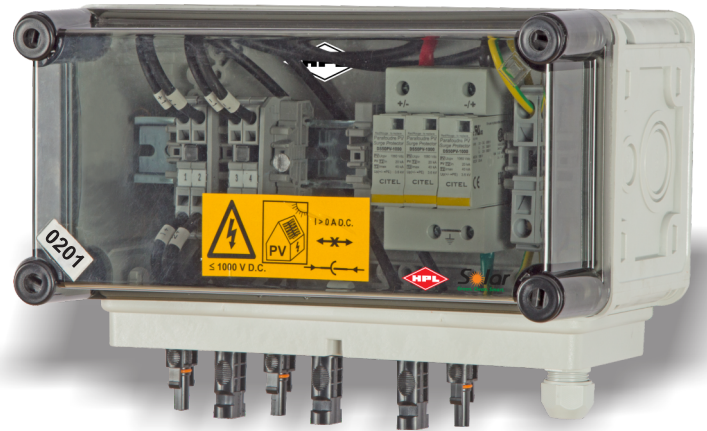


[www.hplindia.com](http://www.hplindia.com)



## Features :-

- HPL Main Junction Boxes are fully insulated according to the requirements of IEC 61439-1 as mandate by MNRE and tested up to an operating voltage of 1000 V DC.
- The enclosure is made of high quality poly-carbonate.
- Degree of protection IP-65
- The enclosure is accessible only via the use of tools in order to ensure the protection
- Customizable based on customer needs.
- Blocks the reverse flow of current from battery to solar panels.
- Reliable electric safety to avoid hazard.
- Obstructs sudden surges due to lightening strokes during cloudy and rainy conditions and ground the surges immediately.
- Fuses for overload protection on each string.
- Blocking Diodes for reverse current flow protection (Optional).
- Easy DC-termination.
- Easy and decent Cable management.
- Time and money saver Solar String management.
- Space saving and orientation flexibility.
- Reliable electric safety to avoid hazard.



| Model    | Description |  |
|----------|-------------|--|
| MJB-0201 | 2 IN 1 OUT  | For Combining 2 Solar Array Junction Boxes |
| MJB-0301 | 3 IN 1 OUT  | For Combining 3 Solar Array Junction Boxes |
| MJB-0401 | 4 IN 1 OUT  | For Combining 4 Solar Array Junction Boxes |
| MJB-0501 | 5 IN 1 OUT  | For Combining 5 Solar Array Junction Boxes |
| MJB-0601 | 6 IN 1 OUT  | For Combining 6 Solar Array Junction Boxes |
| MJB-0701 | 7 IN 1 OUT  | For Combining 7 Solar Array Junction Boxes |
| MJB-0801 | 8 IN 1 OUT  | For Combining 8 Solar Array Junction Boxes |



## HPL Electric & Power Ltd

Corp. Office : Windsor Business Park, B-1D, Sector-10,  
Noida, U.P. - 201301, INDIA. | Tel.: +91-120-4656300  
Registered Office : 1/21, Asaf Ali Road, New Delhi - 110 002, INDIA.  
E-mail : solar@hplindia.com; hpl@hplindia.com

Customer Care No. :  
18004190198

[www.hplindia.com](http://www.hplindia.com)