



## Three Phase Dual Source **STATIC ENERGY METER**

Mains / Generator Selection Through  
240V AC / 24V DC (Different Model)

Ratings Available

10-60A, -/5A CT Operated

### Salient Features

- One meter records Active Energy of two source.
- Optical port communication & RS485 MODBUS communication.
- Mains / Generator selection through 240V AC / 24V DC (Different Model)
- Indication for current reversal tampering and phase availability on the LCD itself.
- Indication on display to indicate the source in use .
- Load survey & Tamper logging available.
- Ratings available : 10-60A, -/5A CT Operated.



### Display Parameters

Measures & Displays the following parameters :

- Mains / DG / Total Cumulative Energy kWh
- Real Date & Time
- Mains / DG maximum demand in kW
- Last billing Cumulative Energy for mains / DG / Total
- Last billing maximum demand in kW for mains / DG
- High resolution for kWh
- Missing potential Tamper with phase identification
- Current polarity reversal Tamper with phase identification
- Current Bypass Tamper
- Neutral Disturbance present Tamper
- Frequency Tamper
- Total Tamper count
- Last Tamper Occurrence
- Slave Address

### Anti-Tamper Features

Display :

- Present source of supply indication
- Phase available indication
- CT Reversal indication for respective phase
- Abnormal frequency indication
- Present Tamper Occurrence & Restoration
- Last Tamper Occurrence & Restoration

Communication:

- 280 Tamper events on FIFO basis for the following Tampers
  - Missing potential
  - Current Reversal
  - Magnetic Tamper
  - Potential imbalance
  - Current imbalance
- The above Tampers will be recorded with snapshots of
  - Tamper type with Date & Time of Occurrence & Restoration
  - Voltage
  - Current
  - PF
  - kWh

### Other Features

- Sealable optical communication port for data downloading using CMRI
- Separate sealable RS485 communication port -for networking applications and AMR applications
- 8 TOD Zone timings

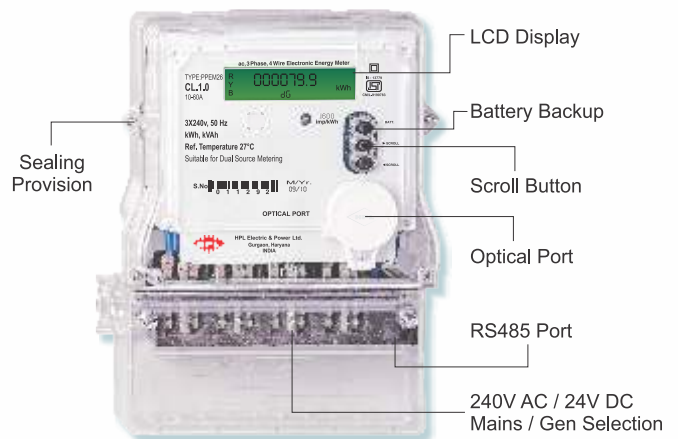
### Technical Specifications

Type	ac, 3 Phase 4 Wire
Reference Voltage	3 x 240 V
Current Rating	10-60A, -/5A CT Operated
Reference Frequency	50 Hz, $\pm 5\%$
Starting Current	0.2% of basic current
Display	Backlit LCD display Large digit size 10mm x 5 mm
Enclosure	Engineering plastic
Power consumption	Less than 1.0 watt. per phase
Mains / Generator Selection	240V, 50Hz AC, or 24V DC
Accuracy	CL 1.0 as per IS:13779:99
Dimensions	247mm x 187mm x 98mm

### Communication Parameters

- 30 minutes load survey for 60 days for mains / DG / Total kWh
- Load profile for 60 days for mains / DG / Total kWh, mains / DG ON hours
- 20 events on DG power ON / OFF provided on FIFO basis
- Anti-Tamper Features
- Billing parameters like kWh, MD kW with date and time for Total, Mains & Generator
- Phase Wise instantaneous Voltage, Current & Power Factor
- Frequency
- Mains Power On Hours & DG Power On Hours
- Total Power On Hours / Total Tamper Counts

### Meter Details



HEPPL/EEM/JULY-16



## HPL Electric & Power Ltd

Corp. Office : Windsor Business Park, B-1D, Sector-10,  
 Noida, U.P. - 201301, INDIA. | Tel.: +91-120-4656300  
 Registered Office : 1/21, Asaf Ali Road, New Delhi - 110 002, INDIA.  
 E-mail : hpl@hplindia.com; enquiry@hplindia.com

Customer Care No. :  
**18004190198**

[www.hplindia.com](http://www.hplindia.com)