

HPL Global Presence



**HPL**  
a profile  
2013



HPLPROFILE02-13



**HPL INDIA LTD.**  
**HPL Electric & Power Pvt. Ltd.**  
1/21, Asaf Ali Road, New Delhi - 110 002 Ph.: 011-23234411, 23234811  
Fax : 011-23232639 E-mail: gsm@hplindia.com

[www.hplindia.com](http://www.hplindia.com)

HPL's vision of creating a niche, as a major player in Indian Electrical Industry with commitment to state-of-the-art technology & world class products.

HPL Group possess nine most modern manufacturing units, ISO 9001 : 2000 certified located at Gurgaon, Kundli, Sonapat, Noida, New Delhi and Himachal Pradesh having 5,00,000 sq. feet covered area to manufacture products conforming to International and Indian standards.

HPL Products Profile has the following Strategic Business Units :

- LV Switchgears
- LV Protection Devices
- Metering and Energy Management Systems
- Lighting
- Luminaires
- Wires & Cables
- Modular Switches

HPL Products are tested at CPRI, ERDA, ERTL, NPL etc. according to Indian Standards, whereas MCB's Rewireable Switches & Electronic Energy Meters carry ISI marking. Further HPL products have approvals from CPWD state PWD's, MES, BSNL & many more Institutional users.

HPL Group with Head Office at New Delhi has extensive Sales & Marketing Network of 69 Branches, over 1500 Authorised Dealers and 18000 Retailers across country, who are committed to provide solutions and services to customer's delight. HPL is also exporting its products to Middle East, SAARC and European Countries.



## Contents

Pages

### Metering

1-8

Emfis Digital Multifunction Panel Mounted Meters  
 Panel Mounted Meter  
 HT Application Meter  
 èbrit : Digital Panel Meter  
 Single & Three Phase Electronic Energy Meter  
 Trivector Meter  
 Prepaid Meter  
 Meter Box

### Industrial Products

9-16

**Air Circuit Breaker**  
*intelliPROTECT* - Range of ACBs  
**HPL - MCCB**  
 TAB : Series of MCCBs  
 Motor Duty - MD Series of MCCBs  
 MCCB Distribution Panel  
 MCCB Enclosure  
**HPL - Controlgear**  
 Contactors, Overload Relays, Accessories  
**Switchgear : HPL**  
 HPL Onload Changeover Switch  
 HPL Load Break Switch  
 LK-HPL SDF/Load Break Switch  
 HPL-HRC Fuse Links, Base & Holders  
 HPL-LT Switchgears

### Distribution / Building Products

17-20

HPL Techno MCB / Isolator/ RCCB  
 HPL Techno Changeover Switch  
 Distribution Systems

### HPL Lighting & Luminaires

21-27

Retrofit & Non Retrofit  
 Mini Retrofit  
 Spiral Retrofit  
 Mini & Full Spiral Retrofit  
 Higher Wattage Retrofit  
 T5 - FTL  
 G 24 Lamps  
 LED Lamps  
 Luminaries  
 Outdoor Lighting

### Wires & Cables

28-29

Domestic & Industrial Wire  
 Co-axial Cable  
 Submersible Cable  
 Telephone Cable  
 Control Cable  
 Instrumentation Cable  
 Networking Data Cable (CT - 5e & 6e)  
 Submersible Winding Wire





## On Load Changeover & Load Break Switches



- Conforms to IEC:60947-3
- from 63A to 3150A
- Fully visualized breaking
- It is very compact in size and hence helps in saving space in the enclosures, panels etc.
- Available in Open execution & Steel sheet Enclosure.
- Any pole can be used as Neutral pole... true 4 pole switch
- The Arc Chamber is specially designed with arc chute plates to enhance the life of the moving & stationary contacts thereby increasing the life of the product.
- Source Separator is used to isolate two incoming supplies and to eliminate possibility of flash over between two supplies.
- Click fit type Terminal shrouds are provided for a complete touch proof design and prevent accidental touching of live terminals. They are click fit type.
- Inter-phase barriers are provided for additional safety to eliminate possibility of inter-phase short circuit.
- Black Handle Padlockable in I - O - II position



#### emfis - Digital Multi-Function Meter

##### Salient Features

- -/5A in class 1.0 accuracy
- CT Primary Programmable upto 6000A (For direct reading)
- Display in Scroll mode :-  
Active Energy kWh, Apparent Energy kVAh, Reactive Energy kVArh, Phase to Phase voltage, Phase to Neutral Voltage, Instantaneous, Average, Maximum and total Current, Active Power kW, Reactive Power kVAR and Apparent Power kVA, Instantaneous and total Power Factor, Frequency
- Maximum demand in kVA / kW with integration Period of 30 Minutes (Optional)
- Real Time & Date (Optional)
- Pulse output
- RS485 Communication (Optional)



#### emfis HT - Digital Multi-Function Meter

##### Salient Features

- Suitable for HT 3 Phase, 3 Wire application
- Programmable CT secondary for 5 A & 1 A
- Display in Scroll mode :  
Active Energy kWh, Apparent Energy kVAh, Reactive Energy kVArh, Phase to Phase voltage  
Instantaneous, Average, Maximum and total Current, Active Power kW, Reactive Power kVAR and Apparent Power kVA, Total Instantaneous Power Factor, Frequency
- RS485 Communication (Optional)



#### emfis - vif Digital Multi-Function Meter

##### Salient Features

- -/5A
- CT Primary Programmable upto 6000A
- Backlit LCD display large 3 lines
- Measures & Displays 17 parameters including:  
Phase to Phase voltage, Phase to Neutral Voltage, Instantaneous Current, Average Current, Maximum Current, Total Current, Frequency
- Suitable for 3 Phase 4 wire LT Network



#### emfis - vifp Digital Multi-Function Meter

##### Salient Features

- -/5A
- CT Primary Programmable upto 6000A
- Backlit LCD display large 3 lines
- Measures & Displays 39 parameters including:  
Phase to Phase voltage, Phase to Neutral Voltage, Instantaneous, Average, Maximum and total Current, Active Power kW, Reactive Power kVAR and Apparent Power kVA  
Instantaneous and total Power Factor, Frequency
- Suitable for 3 Phase 4 wire LT Network





### emfis - vifpe Digital Multi-Function Meter

#### Salient Features

- -/5A in accuracy class 1.0.
- CT Primary programmable up to 6000A.
- Measures and displays 40 parameters including : Active Energy, Phase to phase voltage, Phase to neutral voltage, Instantaneous, Average, Maximum and total current, Active power kW, Reactive power kVAR and apparent power kVA, Instantaneous and total power factor, frequency.
- RS 485 communication (optional)



### HT Application Meter (HT-EPF)

#### Salient Features

- Suitable for 3 Phase 3 Wire System
- CT Operated, -/5A in class 0.5 & 1.0 accuracy
- CT Primary programmable upto 6000A (For Direct reading)
- Low Power consumption less then 1 watt per phase
- Pulse Output
- Parameter displayed kWh, kW, PF & frequency



### Dual Source Meter

#### Salient Features

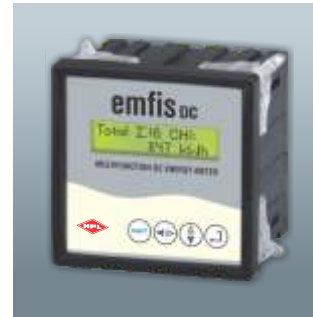
- One Meter records Active Energy of two different sources: Mains & Generator
- Backlit LCD display
- Suitable for 3 Phase 4 Wire Network
- Accuracy class 1.0
- RS 485 MODBUS communication (optional)



### Dual Source Plus

#### Salient Features

- One meter records Active Energy of Two Sources
- Measures over 45 Parameters including Voltage, Current, Frequency, kW, kVA; kVA, PF, Active Energy for Mains, Generator and Total, MD in kW and kVA for Mains and Generator separately with date and time, Run Hours, Power on Hours
- Relay outputs for V, I, kW, kVA, F, kW Demand, kVA demand
- Last 6 months history parameters for kWh and MD through communication
- Last 10 event logging for Mains / Generator switching



### emfis DC- DC Multi Function Meter

#### Salient Features

- Displays : Voltage, Current, Power, Energy
- RS485 MODBUS RTU Communication (Optional)
- Password Protected Programming
- Backlight LCD type Display (16 X 2 line Dot Matrix)
- 6 Months History for kWh, MD kW, Channel Peak Load available on communication
- Reverse Shunt Connection Indication
- Reverse Voltage Connection Indication
- Shunt disconnection indication



### Three Phase Panel Mounted Meter with LCD Display (CT 2E)

#### Salient Features

- CT Operated, -/5A in class 1.0 accuracy
- CT Primary programmable upto 6000A (For Direct reading)
- No separate Auxiliary supply required
- Low Power consumption less then 1 watt per phase
- Pulse Output
- Anti tamper features



### Three Phase Panel Mounted Meter with LCD Display (CT-2EA)

#### Salient Features

- Backlit LCD display.
- CT operated -/5A in class 1.0 accuracy.
- RS 485 communication.
- CT primary programmable up to 6000A (For direct reading).
- Pulse output.



### Three Phase Panel Mounted Meter with Counter Display (CT 2M)

#### Salient Features

- CT Operated, -/5A in class 1.0 accuracy upto 800/5A (For Direct reading) (Ref. Catalogue for available CT Ratio)
- No separate Auxiliary supply required
- Low Power consumption less then 1 watt per phase
- Pulse Output
- Anti tamper features



### Three Phase Panel Mounted Meter with Counter Display for HT Application (CT-2MHT)

#### Salient Features

- Suitable for 3 Phase 3 wire system
- CT operated from 1-6A in class 1.0 accuracy (CT secondary suitable for -/1A and -/5A on the same model)
- PT : 2 x 110 V<sub>LL</sub>
- Low power consumption, less than 1 watt per phase
- No separate auxiliary supply required
- Pulse output



### êbrit : Single & Three Phase Ammeter

#### Salient Features

- Push button based site programming of CT ratio
- Bright 4 Digit 14mm LED display.
- Colour indication for R, Y & B phases.
- Universal Auxiliary Supply - 80 to 300V AC/DC.
- Same model for A & kA.
- Auto scroll facility & scroll lock facility (For Three Phase meter)



### êbrit : Single & Three Phase Voltmeter

#### Salient Features

- Push button based site programming of PT ratio
- Network selection for Star (3 Phase 4 wire) and Delta (3Ph 3Wire)
- Bright 4 Digit 14mm LED display.
- Colour indication for R, Y & B phases.
- Universal Auxiliary Supply - 80 to 300V AC/DC.
- Same model for V & kV.
- Auto scroll facility & scroll lock facility (For Three Phase meter)



### êbrit : PF Meter

#### Salient Features

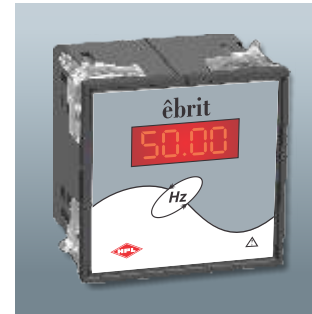
- Measurement range Zero Log Unity-Zero Lead.
- Accuracy  $\pm 0.01$ .
- Log / Lead indication on the display.
- Bright 4 Digit 14mm LED display.
- Universal Auxiliary Supply - 80 to 300V AC/DC.



### êbrit : Kilo Watt Meter

#### Salient Features

- Push button based site programming of CT ratio.
- Available in accuracy class 1.0 & 0.5 (Maintained through out the measurement range.)
- Measure range 0-3.000kW (Direct Measurement)
- Bright 4 Digit 14mm LED display.
- Universal Auxiliary Supply - 80 to 300V AC/DC.



### êbrit : Frequency Meter

#### Salient Features

- Measurement range 40.00 - 99.99 Hz.
- Accuracy Class 0.2 (Maintained through out the measurement range.)
- Bright 4 Digit 14mm LED display.
- Universal Auxiliary Supply - 80 to 300V AC/DC.



### êbrit : Power Meter

#### Salient Features

- Common Meter for kW, kVA and kVAR
- User selectable measurement of kW/ kVAR/ kVA
- Available in Class 0.5 & 1.0
- Sustained accuracy through out the range
- Universal auxiliary supply – 80 to 300 V AC/DC
- Push Button based site programming of CT Ratio
- Bright 4 Digit 14mm LED Display



### HPL - Power Factor Controller

#### Salient Features

- Microprocessor based intelligent auto switching control.
- Automatic C/K and rated step adjustment.
- Automatic CT polarity correction.
- Display of power factor, current & total harmonic distortion of current.
- Programmable sensitivity.
- Last step can be used as alarm / fan output.
- Under / over voltage alarm, under / over compensate alarm & high harmonic distortion alarm.



### Trivector Meter

#### Salient Features

- Range : LT-CT operated -/5A  
CT/PT operated -/5A & -/1A for HT application
- Accuracy class 0.5 as per IS 14697/CBIP 88/IEC
- Logging & display for tamper data
- Measurement & recording of harmonic energy
- Communication : optical & hardwired
- TOD, load survey data, tamper information downloadable to CMRI through optical port



### Three Phase Dual Source Energy Meter

#### Salient Features

- One meter records Active Energy of two source
- Optical port communication & RS485 MODBUS communication
- Mains / Generator selection through 240V AC
- Indication for current reversal tampering and phase availability on the LCD itself
- Indication on display to indicate the source in use
- Load survey / Tamper logging available
- Ratings available : -/5A CT Operated, 5-20A, 10-40A, 10-60A



### Three Phase Electronic Energy Meter With LCD Display (Available with & without optical comm. port)

#### Salient Features

- Accuracy Class 1.0 as per IS13779
- ISI marked ratings: -/5A CT operated 5-30A, 10-40A, 10-60A
- All standard anti tamper features provided
- Optional Features
- Optical communication port
- Logging and display of tamper data
- TOD, load survey, tamper information downloadable to CMRI through optical port
- Display in absence of power supply
- Suitable for AMR



### Three Phase Electronic Energy Meter with Counter Type Display

#### Salient Features

- Range 5-20A, 10-40A, 10-60A, -/5A CT operated in class 1.0 accuracy as per IS 13779
- Instantaneous start
- Low power consumption saving more than 30%
- Meter records correct energy with same accuracy under reverse current connection
- LED indication for current reversal tampering provided
- Phase available indication provided
- Anti tamper features



### Single Phase Electronic Energy Meter With LCD Display (Available with & without optical comm. port)

#### Salient Features

- Accuracy Class 1.0 as per IS13779
- ISI marked ratings: -/5A CT operated 2.5-10A, 5-20A, 5-30A, 10-40A, 10-60A
- All standard anti tamper features provided
- Optional Features
- Optical communication port
- Logging and display of tamper data
- TOD, load survey, tamper information downloadable to CMRI through optical port
- Display in absence of power supply
- Suitable for AMR



### Single Phase Electronic Energy Meter with Counter Type Display

#### Salient Features

- Range 2.5-10A, 5-20A, 5-30A, 10-40A, 10-60A, -/5A CT operated in class 1.0 accuracy as per IS 13779
- Instantaneous start
- Low power consumption saving more than 30%
- Tamper indications provided
- Phase available indication provided
- Anti tamper features



### Transparent Pilfer Proof Meter Box

#### Salient Features

- Made from engineering plastic
- Meter push buttons can be accessed without opening meter box cover
- Meter optical port can be accessed without opening meter box cover
- Push buttons & optical provided on meter box cover are sealable



### Non Transparent Pilfer Proof Meter Box

#### Salient Features

- Made from engineering plastic
- Meter push buttons can be accessed without opening meter box cover
- Meter optical port can be accessed without opening meter box cover
- Push buttons & optical provided on meter box cover are sealable
- Colour available : Admiralty Grey



### Automatic Meter Reading Solution

#### Salient Features

- High speed GSM communication 4800/9600 bps
- For remote metering application



## Air Circuit Breaker 630A - 6300A



## intelliPROTECT intelligent protection RANGE

#### Salient Features of HPL ACB

- Range : 630A – 6300A
- Operational voltage upto 690V & even above - on request
- Icu 65kA to 120kA at 500Vac
- Ics = 100% Icu throughout the range
- Ics & Icu at higher voltages - also available
- Icw : 50kA to 100kA (for 1 sec)
- Icw ratings for 2 sec & 3 sec – also available
- Customer oriented Trip Relay - with advanced measurement functions & communication functions
- Tested & certified as per IEC 60947-1, IEC-60947-2
- Suitable for Aluminum & Copper termination, Conversion of Terminal orientation at site
- Uniform height & depth across the range, very compact
- Wide range of front & easily fittable common accessories



### intelliPROTECT - Air Circuit Breaker

#### Salient Features

- Range : 630A – 6300A
- Operational voltage upto 690V & even above - on request
- Icu 65kA to 120kA at 500Vac
- Ics = 100% Icu throughout the range
- Ics & Icu at higher voltages - also available
- Icw : 50kA to 100kA (for 1 sec)
- Icw ratings for 2 sec & 3 sec – also available
- Customer oriented Trip Relay - with advanced measurement functions & communication functions
- Tested & certified as per IEC 60947-1, IEC-60947-2
- Suitable for Aluminum & Copper termination, Conversion of Terminal orientation at site
- Uniform height & depth across the range, very compact
- Wide range of front & easily fittable common accessories



### TAB™ : Thermal Adjustable Breaker

#### Salient Features

- Conforms to IEC 60947-2 / IS 13947-2.
- Ics=Icu =10kA &16kA (100%) upto 160A in the smallest frame.
- Available in rated current from 20A-160A/63A-250A/250A-630A & in different breaking capacity (from 10kA to 65kA).
- FP version available with neutral fully protected.
- Adjustability-offers close protection to different load condition.
- Line load reversibility, Low let through energy.
- Very Compact in Size & Uniform Door-cut-out in line with MCB.
- Wide range of internal and external accessories.
- ROHS Compliant.
- Also available for DC application.
- MCCB with enclosure/Enclosure separately available.



### Motor Duty MCCBs (MD Series)

#### Salient Features

- Available upto 22 kW / 30 HP in two frame.
- Breaking capacity - 25kA/ 36kA.
- Quick make, Quick break & Trip free mechanism.
- Clear indication of ON, OFF & Trip position.
- Low let through energy.
- Line-Load Reversibility.
- RoHS Compliant .
- Wide range of internal & external accessories including U/V.
- Uniform Door cutout in line with MCB upto Size 2.
- For Special motor starting condition (Starting time beyond 10 Sec & other specific condition) - please contact us.



### MCCB Distribution Panel

#### Salient Features

- Range : 4,6,8,10,12 & 16 ways
- Incoming – 160A / 250A / 400A / 630A
- Outgoing – Upto 250A
- No. of poles of MCCB – 3 / 4
- Multifunction Digital Metering - Optional
- Fully shrouded bus bar with high short circuit withstand
- Provision for single Door / Double Door



### MCCB Enclosure

#### Salient Features

- MCCB conform to IEC 60947-2
- Current ratings from 16A - 800A
- 3P & 4P version
- Low let through energy
- Breaking Capacity (kA) : 10kA - 50kA
- Line Load Reversibility
- Minimum maintenance
- User friendly, robust & compact
- Highly reliable tested solution



### Switch Fuse Unit

#### Salient Features

- Range : SPN : 16, 32, 63 Amps  
DP : 16, 32, 63 Amps  
TPN : 16-320 Amps  
TPN : 16, 32, 63, 100 Amps (fitted with HRC Fuses)
- Tested at International Accredited Independent Laboratory
- Approved by major PSUs & Utilities
- Conforms to IEC : 60947-3



## Contactors & Overload Relays

### Salient Features

- Widest Range of 3P & 4P Contactors upto 800A
- 25 Models in just 9 frames
- Capacitor Duty Contactors upto 62 kvar
- Highest Electrical Life upto 2.5 million operations.
- Differential Bimetallic Overload Relays upto 800A
- Site mounted add on accessories
- Safety cover to avoid dust
- Conformity to latest IEC/IS Standards
- Type II Co-ordination
- CE marked & UL Certified

**intelliCONTROL**  
intelligent control

In technical collaboration with  
**LSIS**, korea



### Contactors

#### Salient Features

- Widest Range of 3P & 4P Contactors upto 800A
- 25 Models in just 9 frames
- Capacitor Duty Contactors upto 62 kvar
- Highest Electrical Life upto 2.5 million operations
- Differential Bimetallic Overload Relays upto 800A
- Site mounted add on accessories
- Safety cover to avoid dust
- Conformity to latest IEC/IS Standards
- Type II Co-ordination
- CE marked & UL Certified
- Conforms to IEC / EN 60947-1,4,UL508



### Thermal Overload Relays

#### Salient Features

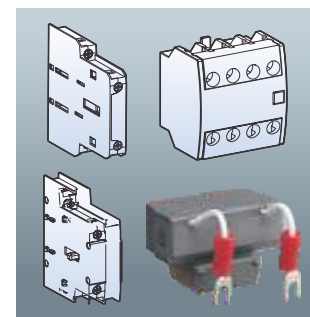
- Differential Bimetallic overload relays from 0.1 to 800A.
- Built in 1No+1NC potential free contacts.
- Choice of Contactor or separate Mounting.
- Option of Manual / Auto Reset.
- Sealable cover to avoid tempering.
- Trip indicator.
- Class 10A or Class 20.
- Site Mounted add on accessories.
- Conforms to IEC / EN 60947-1,4-1



### Control Contactors

#### Salient Features

- Basic 4 Pole Unit
- AC & DC Control
- Add on Aux 2 & 4 Pole
- Ith(Continuous current) 16 Amp.
- DIN Rail or Screw Mounting



### Add On Accessories

#### Salient Features

- Aux.Contacts(Side & Top Mounting)
- Mechanical Interlocking
- Surge Subprocessor Units
- Timer Units
- Safety Covers
- Mechanical Latch Units





### Onload Changeover Switch

**Salient Features**

- Range : 63A-3150A
- Available in 4 Pole version
- Open Execution & Steel sheet enclosure type
- Inbuilt arc chutes for arc quenching for longer electrical life
- Compact body of fibre reinforced polyester resin
- Front operated handle
- IEC-947-3, EN 60947-3, AC-23A



### Load Break Switch

**Salient Features**

- Range : 63A-3150A
- Available in 3 Pole & 4 Pole version
- Inbuilt arc chutes for arc quenching for longer electrical life
- Compact body of fibre reinforced polyester resin
- Front operated handle
- IEC-947-3, EN 60947-3, AC-23A



### Off Load Changeover Switch

**Salient Features**

- Changeover Switches : 16 Amps to 2000 Amps (Available in DP & FP)
- Tested at International Accredited Independent Laboratory
- Approved by major PSUs & Utilities
- Conforms to IEC : 60947-3



### Metal Clad Plugs & Sockets

**Salient Features**

- Range : 10A, 20A for Single Phase (2P+E), 250V
- 20A, 30A for Three Phase (3P+E), 440V
- Outer casing of non corroding die-cast aluminum alloy, interior moulded from superior quality phenolic compound
- Earth connection makes first & breaks last



### HRC Fuse Link - BS Type

**Salient Features**

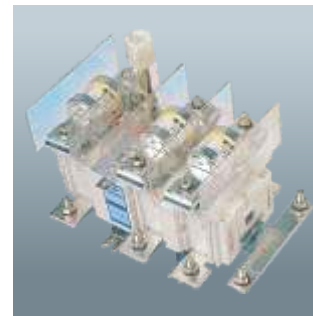
- Range : 2 Amps to 630 Amps
- Breaking capacity >80kA 415V, 50Hz AC
- Conforms to IEC 60269
- Low Watt loss
- Tested at International Accredited Independent Laboratory



### HRC Fuse Link - DIN Type

**Salient Features**

- Range : 2 Amps to 630 Amps
- Breaking capacity >80kA 415V, 50Hz AC
- Conforms to IEC 60269
- Low Watt loss
- Tested at International Accredited Independent Laboratory



### LK - HPL Switch Disconnecter Fuse

**Salient Features**

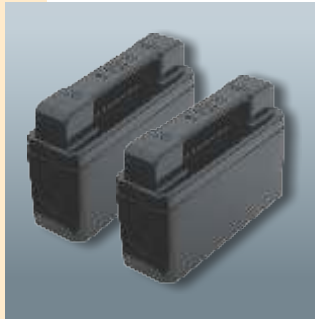
- Range : 32A to 800A, TP, TPN & 4 Pole, 415V, 50Hz
- Conforms to latest IEC 60947-3
- Tested at CPRI, Bhopal for AC-23A duty
- Multiple Roller Contact Mechanism for long life and better performance
- Available in open execution and sheet steel enclosure
- Available in BS & DIN type HRC fuse fittings
- Excellent performance for capacitor duty applications also.



### LK - HPL Load Break Switch (Isolator)

#### Salient Features

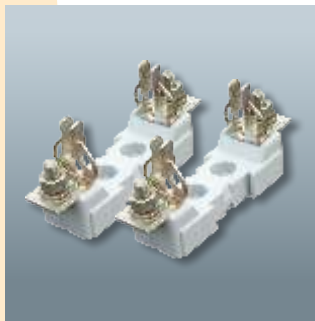
- Range : 32A - 3150 TP, TPN & FP, 415V, 50Hz
- Conforms to IEC 60947-3
- Multiple roller contact mechanism for long life & better performance
- Available in open execution & sheet steel enclosure.
- Excellent performance for capacitor duty applications also.



### Fuse Holder

#### Salient Features

- Conforms to IEC:60269
- Rating : 20 A, 32 A, 63 A, 125 A.
- Choice of Front or Busbar Connection.
- Suitable for BS type Fuse Links.



### Fuse Bases

#### Salient Features

- Conforms to IEC : 60269
- Rating : Size 0      Size 01      Size 02      Size 03  
                         125/160 A    250 A      400 A      630 A
- Choice of DMC Moulding or Sheet Metal Plate Base.
- Suitable for DIN type Fuse Links.



### Fuse Units (Kit-Kat) in porcelain

#### Salient Features

- Conforms to IS : 2086, 1993
- Rating : 16A to 320A (240V & 415V)
- Choice of Rewirable /HRC fuses.



### HPL Techno MCB

#### Salient Features

- Range : 0.5 to 80 Amps 240/415V, AC
- Available in SP, SPN, DP, TP, TPN & FP
- Breaking capacity 10KA
- Insulation voltage : 660V, frequency : 50/60Hz
- Degree of protection : IP20
- DIN rail mounting
- Finger & hand touch safe. Protection against electric shock.
- Mid trip facility
- Protection against Short Circuit & Over load
- Low let through energy & low watt loss
- Energy limiting class 3
- Trip free Mechanism
- Available in B, C & D Curve
- Accessories : UV, Shunt trip, Auxiliary contact
- DC MCB's also available
- DC MCB available in SP & DP
- DC MCB voltage : 12V to 220V



IS/IEC 60898-1



### HPL Techno Isolator

#### Salient Features

- Range : 40, 63, 100 & 125 Amps
- Conforms to IS 13947-3
- Available in 2 P, 3P & 4 P version
- Finger touch proof (IP-20)



### HPL Techno RCCB

#### Salient Features

- Range: 25 - 100Amp, 2 Pole & 4 Pole Version
- Sensitivity: 30mA, 100mA, 300mA
- Conforms to IEC / EN: 61008 & IS:12640
- Dedicated earth leakage protection.
- Voltage Rating 240/415V (AC), 50Hz /60Hz.
- Protection against Earth leakage current
- Auxiliary Switch optional



### HPL Techno Changeover Switch

#### Salient Features

- Range : 25A, 40A, 63A
- Conforms to IS:13947/Part III , IEC:60947 - III
- Choice of 2 Pole & 4 Pole versions
- Voltage Rating 240/415V (AC), 50Hz.
- Front Operation with three stable positions I-O-II
- Isolator at middle position
- DIN Rail Mount facility



### MCB Plastic Enclosure

#### Salient Features

- Made from High Grade.
- Available in both 1/ 2 pole and 3/ 4 pole models.
- Suitable for all types of MCBs.



### Distribution Systems Single Door

#### Salient Features

- SPN & TPN Versions.
- Distribution Systems in 4 to 16 ways
- Aesthetically designed
- Fitted with DIN channel, Bus Bar, Neutral Link Bar, Earth Bar, Inter connecting cables with copper thimble
- Can be mounted on surface / flush



### Distribution Systems Double Door

#### Salient Features

- User friendly, Aesthetically designed, available in EX & DX series Distribution Systems in 4 to 16 ways
- SPN & TPN Versions.
- Bus Bar rating up to 200 Amp
- Fitted with DIN channel, Bus Bar, Neutral Link Bar, Earth Bar, Inter connecting cables with copper thimble
- Complete range of DB's with Double punched knockout to facilitate different size cable glands
- Choice of multiple incomer i.e. MCB, Isolator, ELCB + Isolator, Changeover + Isolator
- TPN DB's fitted with detachable gland plates at the Top & Bottom with double knock-out
- Double Door DB's in flush mounted design



### Consumer Units Single and Double Door

#### Salient Features

- Aesthetically designed Single phase & Three phase distribution systems
- Painted with the latest powder coating technology for long lasting surface finish
- Available with / without transparent plastic cover





### HPL Vertical Distribution Systems

#### Salient Features

- Aesthetically designed, good looking & superior DB's with latest style
- Fitted with Bus Bar, Shorting Links, Neutral Bar & Earth Bar
- Compact design having complete shrouding all over the inter connecting links
- With provision of ELCB along with TPN/FP Isolator as incomer
- Suitable to use as SP/DP/TP/TPN outgoing
- Available with MCCB as incomer
- Available in Single Door & Double Door



### HPL Phase Selector Distribution Systems

#### Salient Features

- Compact distribution system
- Convenient mounting and operation
- Flexibility to use MCB's and ELCB/ELMCB
- Fitted with : DIN channel Bus Bar NL bar 3 Nos.
- Phase changeover switches duly wired (except for MCB's and ELCB's)



### Distribution System with Cement Guard

#### Salient Features

- Available in Single & Double Door DX Distribution Systems
- Distribution Systems in 4 to 16 ways
- Aesthetically designed
- Fitted with DIN channel, Bus Bar, NL Bar, Earth Bar,
- Inter connecting cables with copper thimble
- Can be mounted on surface / flush



### HPL Plug & Socket Distribution Systems

#### Salient Features

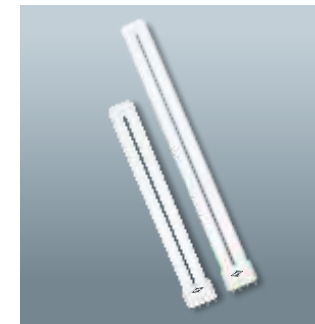
- Range : SP - 10 - 20 A  
                  : TP - 20 - 30 A
- Provision for SP/SPN/DP/TP MCB
- Fitted with indicating light
- CRCA powder coated DB
- Elegant Flush mounting design



### Non Retrofit (SU/DU/T4)

#### Salient Features

- Single ended 2 Pin G23/G-24d-1/G-24d-2 & G-24d-3 bases with integrated starter.
- Single ended 4 Pin 2G7/G24q base.
- Available in colours 6500, 4000 & 2700°K.
- Range in 5W, 7W, 9W,10W, 11W, 13W, 18W & 26W.
- Applicable to dimmer operation.
- Can be connected to almost any kind of power supply.
- Slim and compact, fits in most standard & narrowest fixtures.
- Eight times more life than the normal GLS bulbs.
- High luminous efficacy and excellent colour rendering.



### Non Retrofit (SU/T5)

#### Salient Features

- Single ended 4 Pin 2G11 base.
- Available in colours 6500, 4000 & 2700°K.
- Range in 18W & 36W.
- Applicable to dimmer operation.
- Can be connected to almost any kind of power supply.
- Eight times more life than the normal GLS bulbs.
- High luminous efficacy and excellent colour rendering.



### Regular Retrofit (T4)

#### Salient Features

- Compact lamp with inbuilt electronic control gear.
- Single ended with B22d & E27 bases.
- Available in colours 6500, 4000 & 2700°K.
- Range in 11W, 15W, 20W, 23W, 25W, 27W, 30W & 35W
- Ideal replacement for normal GLS bulb.
- Flicker free instant start.
- Six times more life than the normal GLS bulb.
- High luminous efficacy and excellent colour rendering.



### Mini Retrofit (T3)

#### Salient Features

- Super compact lamp with inbuilt electronic control gear.
- Single ended with B22d, E27 & E14 bases.
- Available in colours 6500, 4000 & 2700°K.
- Range in 5W, 8W, 11W, & 14W
- Ideal replacement for normal GLS bulb.
- Flicker free instant start.
- Six times more life than the normal GLS bulb.
- Fits in to the most compact Down & Up lights.
- High luminous efficacy and excellent colour rendering.



### Spiral Retrofit (T4)

#### Salient Features

- Compact lamp with inbuilt electronic control gear.
- Excellent light distribution.
- Single ended with B22d & E27 bases.
- Available in colours 6500, 4000 & 2700°K.
- Range in 15W, 20W, 23W, 25W, 27W, 30W & 35W
- Ideal replacement for normal GLS bulb.
- Flicker free instant start.
- Six times more life than the normal GLS bulb.
- High luminous efficacy and excellent colour rendering.



### Mini Spiral Retrofit (T3)

#### Salient Features

- Super compact lamp with inbuilt electronic control gear.
- Excellent light distribution.
- Single ended with B22d, E27 & E14 bases.
- Available in colours 6500, 4000 & 2700°K.
- Range in 7W, 9W, 11W & 15W.
- Ideal replacement for normal GLS bulb.
- Flicker free instant start.
- Six times more life than the normal GLS bulb.
- Fits in to the most compact Down & Up lights.
- High luminous efficacy and excellent colour rendering.



### G 24 Lamps

#### Salient Features

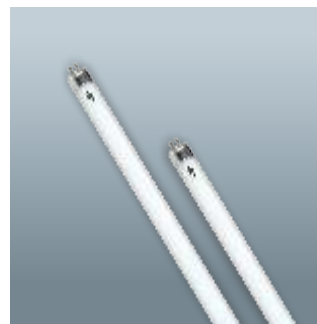
- Single ended 2 pin G24 with in build electronic control gear
- Available in colors 6500 & 2700 °k.
- Range in 11W, 15W in four U and 15W, 18W in Spiral
- Applicable to dimmer operation
- Compact lamps fits in most standard fixtures
- High Luminous efficacy and excellent color rendering



### Higher Wattage Regular/Spiral Retrofit (T5)

#### Salient Features

- High Power Factor  $\geq 0.9$ .
- Compact lamp with inbuilt electronic control gear.
- Single ended four tube, with B22d, E27 & E40 bases.
- Available in colours 6500, 4000 & 2700°K.
- Range in 45W, 65W & 85W (in both 4U & Spiral).
- Flicker free instant start.
- Six times more life than the normal GLS bulb.
- High luminous efficacy and excellent colour rendering.



### T5 - Fluorescent Tube Light

#### Salient Features

- Extra slim fluorescent tube light.
- Available in colours 6500, 4000 & 2700°K.
- Range in 14W & 28W
- Rated life more than 10000 hrs.
- Least light depreciation during its life span.
- High luminous efficacy and excellent colour rendering.



### LED Decor

#### Salient Features

- Single ended with B22d, E14 & E27 base
- Available in color Frosted, Red, Green, Blue & Yellow
- Range in 0.5W (All color) & 1.2W (Only in Frosted)
- Ideal for Decorative lighting
- Flicker free, Instant Start
- Life upto 25000 burning hours.



### LED Ball / Candle

#### Salient Features

- Single ended with B22d, E14 & E27 base
- Available in color 6500 & 2700 °k.
- Range in 1.5W in Ball, 2.5W & 3.5W (both in Ball & Candle)
- Ideal for general lighting
- Flicker free, Instant Start
- Life upto 25000 burning hours.

### Metal Halide Lamps

MH lamps are available in Double Ended & Single Ended versions. Double ended lamps are available in 70w & 150w. Single Ended lamps are available in Elliptical (ranging from 70w to 400w) & Tubular version (ranging from 35w to 400w). These lamps offers efficacy upto 80-85 lumens / watt.



#### G12 Single Ended, 35, 70,150W

##### Salient Features

- UV Shield
- Better Colour Rendering
- Longer Life
- Highly Efficient
- Precise optical control



#### Double Ended, 70,150W

##### Salient Features

- UV Shield
- Better Colour Rendering
- Longer Life
- Highly Efficient
- Precise optical control
- Faster Warm up & Hot
- Re-strike



#### Single Ended-Elliptical, 70,150, 250, 400W

##### Salient Features

- UV Shield
- Better Colour Rendering
- Better Cold Starting
- Superior Lumen Maintenance
- Faster Warmup & Hot
- Re-strike



#### Single Ended-Tubular, 70,150, 250, 400W

##### Salient Features

- UV Shield
- Better Colour Rendering
- Better Cold Starting
- Superior Lumen Maintenance
- Faster Warmup & Hot
- Re-strike

### Consumer Lighting



#### T5 Luminaries - Pearl, Aries, Venus, Orbit .....

##### Salient Features

- Extruded aluminum Energy efficient T5 batten fitted with decorative end caps.
- Suitable for surface and wall mounting, connection through center cord.
- Provided with ribbed diffuser for glare free uniform light distribution.
- Fitted with HPF Electronic ballast.
- Used in living Rooms, Offices, Lobbies, Stair cases etc.



#### Decorative Luminaries - Silicon, Magnum, Wisdom, Olympus, Olympus Plus

##### Salient Features

- Surface and recessed mounted decorative fixture fitted with energy efficient lamps.
- Engineering plastic housing white in color .
- Fitted with opaque diffuser for diffused light and with Poly carbonate colored ring to enhance aesthetics.
- Used in offices, balconies, corridors etc.



#### Astor, Alpha, Frazer

##### Salient Features

- Housing made up of extruded Aluminum and CRCA, powder coated in white.
- Suitable for wall & surface mounting.
- Luminaries with diffuser for uniform light distribution.
- Fitted with HPF electronic ballast.
- Used in offices, corridors and balcony etc.

### Industrial Luminaries



#### Legacy and Satin

##### Salient Features

- Box type batten suitable for T5 and T8/12 fluorescent lamp
- Provided with powder coated reflector.
- T5 and T8 Box type battens are fitted with HPF Electronic ballast and magnetic ballast (T8/T12).
- Also available with powder coated and high purity Pre
- Anodized Aluminium reflector.
- Suitable for Wall, Ceiling and suspended type of mounting.

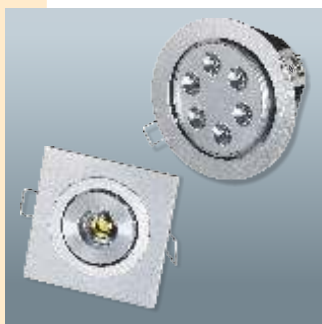
## Commercial Lighting



### Mirror optics

#### Salient Features

- Recess and Surface mounted mirror optics suitable for T5, T8 and FP-L lamps.
- Fitted with high purity pre anodized aluminum reflector for better light control.
- Provided with HPF electronic and magnetic ballast.
- Housing made up of CRCA sheet metal, epoxy powder coated white finishing.
- Used in Offices, auditorium & showrooms etc.



### LED Lighting

#### Salient Features

- Recessed, swivel down light to aim the light in desired direction.
- LED life is more than 50,000 burning hours.
- Energy Saving ,Eco-friendly, shock proof in design.
- Used for Offices, restaurants, showrooms, lobbies etc.



### CFL Downlights

#### Salient Features

- Recess and surface mounted downlighters suitable for Retro and Non- Retrofit CFL lamps.
- High purity aluminum reflector electrochemically brightened & anodized specially profiled.
- Available with HPF electronic and magnetic ballast .
- Available in Pressure die cast Aluminium and CRCA sheet metal, epoxy powder coated white finishing on ring and Black on housing.
- Used in Offices, Restaurants, showrooms & lobbies etc.



### Accessories

#### Ballasts :

- Two types of ballasts are offered (1) Electromagnetic Ballast (Copper wound open construction ballast)
- The VPIT Magnetic Ballasts are available for Compact Fluorescent Lamps (CFL) ranging from 9W to 36W
- Fluorescent Tubular Lamp (FTL) ranging from 18W to 40W
- High pressure Sodium vapor lamp / metal Halide Lamp range from 70W to 400W.
- The Electronic Ballast are available for CFL ranging from 9W to 36W & FTL ranging from 18W to 40W.



### LED Street Light & LED Flood Light

#### Salient Features

- Confirms to IS: 10322 (Part 5/see 3) – 1987
- Available voltages – 30W, 40W, 60W, 90W, 120W, 160W with IP 65/IP 66
- LED Lap Make – Osram/Nichia/Cree
- Lamp efficiency - > 100 lumen/watt
- Lamp life – 50,000 burning hours with L 70 criteria
- CRI > 80, PF > 0.95 THD < 10%
- Confirms LM 79 & LM 80



### T5 Street Light

#### Salient Features

- Single piece deep drawn Al. Sheet
- Acrylic cover UV stabilized with rubber gasket fitted with toggle.
- Available in 2x14, 4x14, 2x24 & 4x24. IP-65.
- Immediate start without fleck ring with HPF electronics Ballast.



### Street Light MHL

#### Salient Features

- Available in 70/150/250/400W.
- Single piece die cast Al. LM-6.
- Heat resistance toughened glass
- Confirm IP-65/IP-66.
- Used in Roads, Highway, Societies, Industrial Areas.



### Flood Light

#### Salient Features

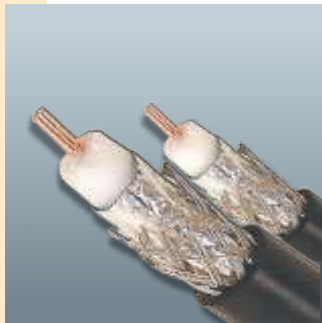
- Available in 70/150W MHDE lamp.
- Pressure dia cast Al LM-24.
- Tempered protective toughened glass thermal shock & impact resistance.
- Confirm IP-65.
- Used in Construction site, Industrial Area, Garden & Parks.



### Domestic & Industrial Wire

#### Salient Features

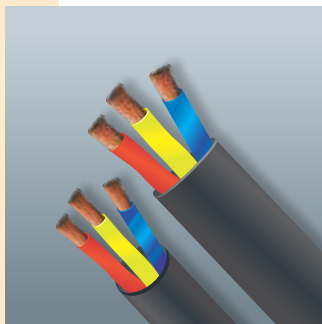
- Range : 0.5 to 400 Sq. mm in Single Core & Multicore Available in FR / FRLS / HR / ZHFR insulation
- Conforms to IEC 60227-1
- Multi strand 100% Pure annealed Electrolytic copper conductor
- Bunching of copper in uniform lay & diameter
- High insulation Resistance
- Double insulation with ultra thin layer



### Co-axial Cable

#### Salient Features

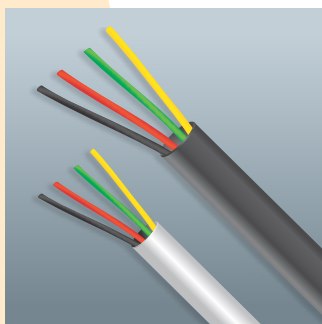
- Range : RG-59, RG-6, RG-11
- Solid / Stranded bare annealed electrolytic grade copper
- PE foam and solid
- Copper ABC / ATC Wire braiding / aluminum foiling / taping
- Specially formulated PVC
- RG and UR series BS : 2316 / MIL-C-17
- IEC-60332-1



### Submersible Cable

#### Salient Features

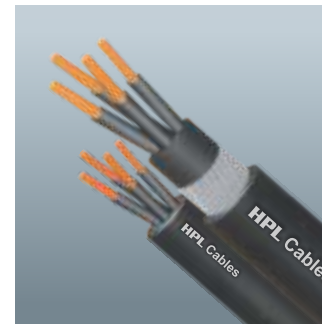
- Range : 1.0 to 95.0 Sq. mm three core flat cable.
- Stranded bare annealed electrolytic grade copper conductor
- Specially formulated PVC compound (Type A & ST-1)
- Round submersible cable can be specially asked for
- Conforms to IS 694/1990
- IEC-60227-1



### Telephone Cable

#### Salient Features

- Range : 0.45 / 0.5 / 0.6 / 0.7 / 0.8 / 0.9 mm dia conductors available up to 50 pairs.
- Bare / tinned annealed copper Conductor PVC / PE Insulated
- Individual / Overall Shielded with aluminium tape (Polyester backed)/ Melinex Tape
- TEC Specification G/WIR 06/02.



### Control Cable

#### Salient Features

- Range : 1.5 & 2.5 Sq. mm upto 61 Core, 1100 Volt Grade conforming to IEC-60502-1.
- Solid/ Stranded 100% pure annealed Electrolytic copper conductor.
- Insulation PVC/XLPE/HR
- Armourd/ Unarmourd- GI Round wire/Flat Strip.
- Outer Sheath PVC (ST-I) /FRLS/HR/ ZHFR.
- Heavy Duty Performance.
- Best combination safety.
- Efficiency & economy.
- Use in Process Control, Communication and Panel control.



### Instrumentation Cable

#### Salient Features

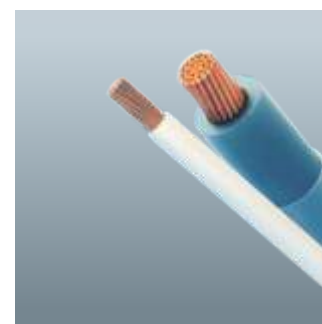
- Range : 0.5 Sq. mm to 2.5 Sq. mm Conforming IEC-189 & IEC-60027
- Shielding: Core/Pair/Triad/Quads.
- Armourd / Unarmourd.
- ABC/ATC, Solid/Standard 100% pure annealed Electrolytic copper conductor.
- Low attenuation and cross talk.
- Low structural return loss.
- High speed performance.
- For Analog & Digital Signals.
- High transmission Reliability.
- Use in Digital Control, measuring & Communication systems.



### Networking Data Cable (CAT - 5e & 6e)

#### Salient Features

- Range : 4-Pair UTP CAT-5e and CAT-6e Cable.
- Solid 100% pure annealed Electrolytic copper conductor.
- Low attenuation and cross talk.
- Low structural return loss.
- High speed performance.
- Gigabite Ethernet
- Suitable for Voice, Data, Video.
- 100 ohm impedance cable.



### Submersible Winding Wire

#### Salient Features

- Range : 0.40mm to 3.00mm
- Solid / Stranded Copper Conductor
- 100% pure annealed Electrolytic copper conductor
- HR PVC insulated
- Use for submersible pump Motors
- As per IS : 8783 (Part 4 / Sec-I) : 1985

