

Switchgear, Lighting & Protection Systems



HPL's vision of creating a niche, as a major player in India Electrical Industry with commitment to state-of-the-art technology & world class products.

HPL Group possess nine most modern manufacturing units, ISO 9001 : 2000 certified located at Gurgaon, Kundli, Sonapat, Panipat, Noida, New Delhi and Himachal Pradesh having 5,00,000 sq. feet covered area to manufacture products confirming to International and India standards.

HPL Products Profile has the following Strategic Business Units :

- **LV Switchgears**
- **LV Protection Devices**
- **Metering and Energy Management Systems**
- **Lighting**
- **Luminaires**
- **Wires & Cables**
- **Electrical Wiring Accessories**

HPL Products are tested at CPRI, ERDA, ERTL, NPL etc. according to Indian Standards, whereas MCB's Rewireable Switches & Electronic Energy Meters carry ISI marking. Further HPL products have approvals from CPWD state PWD's, MES, BSNL & many more Institutional users.

HPL Group with Head Office at New Delhi has extensive Sales & Marketing Network of 69 Branches, over 1500 Authorised Dealers and 18000 Retailers across country, who are committed to provide solutions and services to customer's delight. HPL is also exporting its products to Middle East, SAARC and European Countries.



smART

ART MEETS STATE-OF-THE-ART

TESTED AS PER BIS SPECIFICATION

EASY-TO-USE SNAP FIT MODULES

ELEGANT DESIGN

SILVER NICKEL CONTACT FOR ENHANCED ELECTRICAL LIFE

HIGH GRADE ENGINEERING PLASTIC

ANTI-SPARK SHIELD and FINGER PROTECTED TERMINALS

HIGH TENSILE BRASS SCREWS

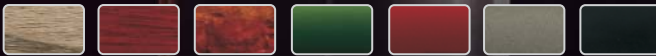
FRONT INSERTION AND REMOVAL

INTRODUCING HPL MODULAR SWITCHES.

ELEGANT DESIGN MEETS TRULY ADVANCED TECHNOLOGY.

Elegant designs made with the highest quality materials. Backed by the world's most rigorous, thoroughly tested technology. Welcome to the world of HPL switches. Welcome to art that's state-of-the-art.

CHOOSE FROM
A RANGE OF OVER 21
COLOURS, TEXTURES
AND FINISHES.



HPL Electric & Power Pvt. Ltd.

1/21, Asaf Ali Road, New Delhi - 110 002, INDIA Tel.:+91-11-23234411, 23234811, 23236811, Fax :+91-11-23232639
E-mail : hpl@hplindia.com www.hplindia.com



POWER OF TECHNOLOGY

Metering

4-12

Emfis Digital Multifunction Panel Mounted Meters
 Panel Mounted Meter For LT & HT Applications
 Power Factor Controller
 èbrit : Digital Panel Meter
 Single & Three Phase Electronic Energy Meter
 Trivector Meter / Prepaid Meter
 Meter Box

Industrial Products

13-19

Air Circuit Breaker
intelliPROTECT - Range of ACBs
HPL - MCCB
 TAB : Series of MCCBs
 Motor Duty - MD Series of MCCBs
 Double Break High Breaking Capacity MCCBs
 Load Guard - Range of MCCBs
 MCCB Distribution Panel
 MCCB Enclosure
IntelliCONTROL - Range of Controlgear
 Contactors, Overload Relays, MPCB,
 Submersible Pump Controller Panel
Switchgear : HPL
 AV Changeover Switches
 AV Switch Fuse Changeover Switches
 AV Onload By Pass Switches
 AV Cubicle Load Break Switches
 Automatic Transfer Switch (3XS)
 Digital Programmable Changeover Switch
 Motorised Changeover Switch
 Automatic Transfer Switch (RTS)
 Modular Automatic Transfer Switch (ATyS M)
 LBS - Sirco M and MV
 Earth Leakage Relays (Resys)
 Elektra Rotary Switches
 LK SDF/Load Break Switch
 HRC Fuse Links, Base & Holders
 Rewireable / LT Switchgears

Distribution / Building Products

20-23

HPL bsafe MCB
 HPL Techno MCB / Isolator/ RCCB
 HPL Techno Changeover Switch
 Rakshak MCB / Isolator
 Distribution Systems

HPL Lighting & Luminaires

24-30

Retrofit & Non Retrofit
 Mini Retrofit / Spiral Retrofit
 Mini & Full Spiral Retrofit
 Higher Wattage Retrofit
 T5 - FTL
 G 24 Lamps / LED Lamps
 Luminaries / Outdoor Lighting

Wires & Cables

31-32

Domestic & Industrial Wire
 Co-axial Cable / Submersible Cable
 Telephone Cable / Control Cable
 Instrumentation Cable
 Networking Data Cable (CT - 5e & 6e)
 Submersible Winding Wire

Electrical Wiring Accessories

33-34

smART - Modular Switch
 SMARTER - Accessories
 TUFF - Solo Switches



emfis - Digital Multi-Function Meter

Salient Features

- -/5A in class 0.5 & 1.0 accuracy
- Suitable for 3 Phase 4 Wire LT Network.
- CT Primary Programming upto 6000A (For direct reading)
- Three line LCD backlit display.
- Displays: Voltage, Current, Frequency, Power Factor, Power, & Trivector Energy.
- Three push buttons on the front panel for programming and scrolling.
- Maximum demand in kVA / kW with integration Period of 30 Minutes (Optional)
- RS485 Communication (Optional)



emfis HT - Digital Multi-Function Meter

Salient Features

- Programmable CT secondary for 5A & 1A
- Suitable for HT 3Phase 3 Wire /3 phase 4 wire (different model) application
- Display in Scroll Mode: Active Energy kWh, Apparent Energy kVAh, Reactive Energy kVArh, Phase to Phase voltage, Instantaneous, Average, Maximum and total Current, Active Power kW, Reactive Power kVA and Apparent Power kVA, Total Instantaneous Power Factor, Frequency
- Rs485 Communication (Optional)



emfis - vif Digital Multi-Function Meter

Salient Features

- -/5A in class accuracy 1.0
- Suitable for 3 Phase 4 Wire LT Network
- CT Primary Programmable upto 6000A
- Backlit LCD Display 17 parameters including: Phase to Phase voltage, Phase to Neutral Voltage, Instantaneous Current, Average Current, Maximum Current, Total Current, Frequency



emfis - vie Digital Multi-Function Meter

Salient Features

- Three Line Backlit LCD Display
- Optically Isolated Energy Pulse Output
- RS485 MODBUS Communication
- Provision for Special Screens Shots
- CT Secondary -/1A for -/5A (site selectable)
- Additional Parameters Power On Hour / Run Hours



emfis - vifp Digital Multi-Function Meter

Salient Features

- -/5A in accuracy class 1.0
- Suitable for 3 Phase 4 Wire LT Network
- CT Primary Programmable upto 6000A
- Three Line Backlit LCD display.
- Measures & Displays 39 parameters including : Phase to Phase Voltage, Phase to Neutral Voltage, Instantaneous, Average, Maximum and Total Current, Active Power kW, Reactive Power kVAR and Apparent Power kVA, Instantaneous and Total Power Factor, Frequency



emfis - vifpe Digital Multi-Function Meter

Salient Features

- -/5A in accuracy class 1.0
- Suitable for 3 Phase 4 Wire LT Network
- CT Primary Programmable upto 6000A
- Three Line Backlit LCD display.
- Measures & Displays 40 Parameters including : Active Energy, Phase to Phase Voltage, Phase to Neutral Voltage, Instantaneous, Average, Maximum and Total Current, Active Power kW, Reactive Power kVAR and Apparent Power kVA, Instantaneous and Total Power Factor, Frequency
- RS 485 Communication (Optional)



emfis - plus Digital Multi-Function Meter

Salient Features

- Suitable for 3 Phase 4 Wire LT Network.
- Three line LCD backlit display.
- Displays: Voltage, Current, Power Factor, Power, Trivector Energy & THD.
- Last 6 month history parameters for kWh, kVAh, kVArh (lag, lead) & MD KW, kVA through Communication
- Relay Output for V, I, Total kW, Total kVA, F, kW MD & kVA MD.
- Last 30 days Load Survey through communication.
- Last 10 Occ. / Res. event for each relay 1 & 2 through communication



emfis DC - Digital Multi Function Meter (DC Application)

Salient Features

- Displays : Voltage, Current, Power, Energy
- RS485 MODBUS RTU Communication (Optional)
- Password Protected Programming
- Backlit LCD type Display (16 X 2 line Dot Matrix)
- 6 Months History for kWh, MD kW, Channel Peak Load available on communication
- Reverse Shunt Connection Indication
- Reverse Voltage Connection Indication
- Shunt Disconnection Indication



Dual Source Meter

Salient Features

- One Meter records Active Energy of two different sources : Mains & Generator
- Backlit LCD display
- Suitable for 3 Phase 4 Wire Network
- Accuracy class 0.5 & 1.0
- Rs485 MODBUS communication (optional)



Dual Source Plus

Salient Features

- One meter records Active Energy of Two Sources
- Measures over 45 Parameters including Voltage, Current, Frequency, kW, kVA; kVAr, PF, Active Energy for Mains, Generator and Total, MD in kW and kVA for Mains and Generator separately with date and time, Run Hours, Power on Hours
- Relay outputs for V, I, kW, kVA, F, kW Demand, kVA demand
- Last 6 months history parameters for kWh and MD through communication
- Last 10 event logging for Mains / Generator switching



Three Phase Panel Mounted Meter with LCD Display (CT 2E)

Salient Features

- CT Operated, -/5A in class 1.0 accuracy
- CT Primary programmable upto 6000A (For Direct reading)
- No separate Auxiliary supply required
- Low Power Consumption less then 1 watt per phase
- Pulse Output
- Anti tamper features



Three Phase Panel Mounted Meter with LCD Display (CT-2EA)

Salient Features

- Backlit LCD display.
- CT operated -/5A in class 1.0 accuracy.
- RS 485 communication
- CT Primary programmable upto 6000A (For direct reading).
- Pulse output.



Three Phase Panel Mounted Meter with Counter Display (CT 2M)

Salient Features

- CT Operated, -/5A in class 1.0 accuracy
- Available upto 800/5A (for direct reading) (Ref. Catalogue for available CT Ratio)
- No separate Auxiliary supply required
- Low Power Consumption less then 1 watt per phase
- Pulse Output
- Anti tamper features



êbrit : Single & Three Phase Ammeter

Salient Features

- Push button based site programming of CT Ratio
- Bright 4 Digit 14mm LED display
- Colour indication for R, Y & B phases
- Universal Auxiliary Supply : 80 to 300V AC/DC
- Same model for A & kA
- Auto scroll facility & scroll lock facility (For Three Phase meter)



êbrit : Single & Three Phase Voltmeter

Salient Features

- Push button based site programming of PT Ratio
- Network selection for Star (3 Phases 4 wire) and Delta (3phase 3 wire)
- Bright 4 Digit 14mm LED display
- Colour indication for R, Y & B phases
- Universal Auxiliary Supply : 80 to 300V AC/DC
- Same model for V & kV
- Auto scroll facility & scroll lock facility (For Three Phase meter)



êbrit : PF Meter

Salient Features

- Measurement range Zero Log Unity-Zero Lead
- Accuracy $\pm 0.01\%$
- Lag / Lead indication on the display
- Bright 4 Digit 14mm LED display
- Universal Auxiliary Supply - 80 to 300V AC/DC



êbrit : Kilo Watt Meter

Salient Features

- Push button based site programming of CT & PT ratio.
- Available in accuracy class 1.0 & 0.5 (Maintained through out the measurement range.
- Measure range 0-3.000kW (Direct Measurement)
- Bright 4 Digit 14mm LED display.
- Universal Auxiliary Supply - 80 to 300V AC/DC.



Trivector Meter

Salient Features

- Range : LT-CT operated -/5A
CT/PT operated -/5A & -/1A for HT application
- Accuracy class 0.5 as per IS 14697/CBIP 88 /IEC
- Logging & display for tamper data
- Measurement & recording of Trivector energy
- Communication : optical & hardwired
- TOD, load survey data, tamper information downloadable to CMRI through optical port



Three Phase Dual Source Energy Meter

Salient Features

- One meter records Active Energy of two source
- Optical port communication & RS485 MODBUS communication
- Mains / Generator selection through 240V AC / 24V DC (Different model)
- Indication for current reversal tampering and phase availability on the LCD itself
- Indication on display to indicate the source in use
- Load survey / Tamper logging available
- Ratings available : -/5A CT Operated, 5-20A, 10-40A, 10-60A



Three Phase Electronic Energy Meter With LCD Display (Available with & without optical comm. port)

Salient Features

- Accuracy Class 1.0 as per Is13779
- ISI marked ratings: -/5A CT operated 5-30A, 10-40A, 10-60A
- All standard anti tamper features provided

Optional Features

- Optical communication port
- Logging and display of tamper data
- TOD, load survey, tamper information downloadable to CMRI through optical port
- Display in absence of power supply
- Suitable for AMR



Three Phase Electronic Energy Meter with Counter Type Display

Salient Features

- Range 5-20A, 10-40A, 10-60A, -/5A CT operated in class 1.0 accuracy as per IS 13779
- Instantaneous start
- Low power consumption saving more than 30%
- Meter records correct energy with same accuracy under reverse current connection
- LED indication for current reversal tampering provided
- Phase available indication provided
- Anti tamper features



Single Phase Electronic Energy Meter With LCD Display (Available with & without optical comm. port)

Salient Features

- Accuracy Class 1.0 as per IS13779
- ISI marked ratings: -/5A CT operated 5-20A, 5-30A, 10-40A, 10-60A
- All standard anti tamper features provided

Optional Features

- Optical communication port
- Logging and display of tamper data
TOD, load survey, tamper information downloadable to
- CMRI through optical port
- Display in absence of power supply
Suitable for AMR



Single Phase Electronic Energy Meter with Counter Type Display

Salient Features

- Range 5-20A, 5-30A, 10-40A, 10-60A, -/5A CT operated in class 1.0 accuracy as per IS 13779
- Instantaneous start
- Low power consumption saving more than 30%
- Tamper indications provided
- Phase available indication provided
- Anti tamper features



Transparent Pilfer Proof Meter Box

Salient Features

- Made of UV stabilized transparent polycarbonate/Flame retardant high grade engineering plastic.
- Unique arrangement for pilfer proof interlocking with hinge type boxes.
- Suitable for indoor and outdoor applications.
- Complying to IS:14772 and tested at CIPET.
- Sealable optical port provision on the cover of the meter box.
- Sealable push buttons provided on the box cover.
- Latest state of the art Inhouse tool room to design meter boxes for special application.
- Large capacity in house moulding for quick and bulk supplies.



Automatic Meter Reading Solution

Salient Features

- High speed GSM communication 4800/9600 bps
- For remote metering application



Prepaid Metering Solutions

Salient Features

- Available in Single Phase & Three Phase.
- Ratings available 10-60A in class accuracy 1.0
- As per IS 15884:2010.
- Available in dual source application
- Allow user to budget their consumption.
- Transparent system for utility and consumers.
- Manual meter reading, system not required bill delivery not required.
- Supply disconnection is automatic for non payment customer
- Anti tamper features provided in the meter



LPR Zigbee Metering Solutions

Salient Features

- Available in Single Phase 5-30A & 10-40A
- Energy Meter Based on IEEE 802.15.4
- Centerlised data collection system
- Automated device address management
- Each meter aids transfer of data for self as well as neighboring meter
- Wire less commissioning, network scalability features



intelliPROTECT - Air Circuit Breaker

Salient Features

- Range : 630A – 6300A
- Operational voltage upto 690V & even above - on request
- Icu 50kA to 120kA at 500Vac
- Ics = 100% Icu throughout the range
- Icw : 50kA to 100kA (for 1 sec)
- Customer oriented Trip Relay - with advanced measurement functions & communication functions
- Tested & certified as per IS/IEC 60947-2



TAB™ : Thermal Adjustable Breaker

Salient Features

- Conforms to IS/IEC 60947-2.
- Available in rated current from 20A-160A/63A-250A/250A-630A, 500A - 800A & in different breaking capacity (from 10kA to 65kA).
- Available in 1P, 2P, 3P & 4P Versions
- 4P version available with neutral fully protected.
- Adjustability-offers close protection to different load condition.
- Line load reversibility, Low let through energy.
- Wide range of internal and external accessories.
- ROHS Compliant.
- Also available for DC application.
- MCCB with Enclosure / Enclosure separately available.
- Single Pole MCCBs are available from 10A - 250A with breaking capacity from 10kA - 50kA, SP MCCBs from 63A-250A are available with thermal adjustable feature



Motor Duty MCCBs (MD Series)

Salient Features

- Available upto 22 kW / 30 HP in two frame.
- Breaking capacity - 25kA / 36kA.
- Clear indication of ON, OFF & Trip position.
- Low let through energy.
- For Special motor starting condition (Starting time beyond 10 Sec & other specific condition) - please contact us.



new

Double Break High Breaking Capacity MCCBs

Salient Features

- Rated Current : upto 1250A
- No of Poles : 3 / 4
- Breaking Capacity (Icu) : Upto 100kA
- Type of Release : Microprocessor based, thermo-magnetic
- Residual Current protection - Optional
- Conforms to IS/IEC 60947-2.



Load Guard MCCBs

Salient Features

- Available in 6 frame sizes rated current from 10A-800A
- Wide range of breaking capacity 10, 15, 25, 36, 50 & 65kA
- Available in both fixed & adjustable magnetic setting for HPL-600 & HPL-800
- Available with wide range of accessories : Under voltage release, Shunt trip release, Auxiliary contact, Alarm contact & Extended rotary handle (RHOM)
- True RMS sensing - accurate and close protection
- High repeat accuracy - reliable protection
- Built in operation - check function with Field Testing Provision



MCCB Distribution Panel

Salient Features

- Range : 4, 6, 8, 10 & 12 ways
- Incoming – 160A / 250A / 400A / 630A
- Outgoing – Upto 250A
- No. of poles of MCCB – 3 / 4
- Multifunction Digital Metering - Optional
- Fully shrouded bus bar with high short circuit withstand
- Provision for single Door / Double Door



MCCB Enclosure

Salient Features

- MCCB conform to IS/IEC 60947-2
- Current ratings from 16A - 800A
- 3P & 4P version
- Low let through energy
- Breaking Capacity (kA) : 10kA - 65kA (with MCCB)
- Line Load Reversibility
- Minimum maintenance
- User friendly, robust & compact
- Highly reliable tested solution

Contactors

Salient Features

- Widest Range of 3P & 4P Contactors upto 800A
- 4 Pole Control Contactor with option upto 12 contacts
- Capacitor Duty Contactors upto 62 kvar
- Highest Electrical Life upto 2.5 million operations
- Differential Bimetallic Overload Relays upto 800A
- Site mounted add on accessories (Auxiliary Contacts, Mechanical Interlock, Surge Suppressor, Timer, Mechanical Latch Units)
- Conformity to latest IEC/IS Standards
- Type II Co-ordination
- CE marked & UL Certified



Thermal Overload Relays

Salient Features

- Differential Bimetallic overload relays from 0.1 to 800A
- Built in 1No+1NC potential free contacts
- Choice of Contactor or separate Mounting
- Option of Manual / Auto or Remote Reset
- Sealable cover to avoid tampering
- Trip indicator
- Class 10A or Class 20
- Site Mounted add on accessories



new Motor Protection Circuit Breakers (Motocop)

Salient Features

- Wide range of MPCB from 0.1 to 63A
- 22 Ratings in just 2 frames
- Rotary Type Operation (Direct & Extended Handle)
- Protection against O/L, S/C & Single Phasing
- Higher Breaking capacity upto 50kA, 480 VAC
- Electrical / Mechanical Life - 1 Million Operations
- Suitable for Isolation & Type II Co-ordination
- Ambient Temperature Compensated
- Site Mounted add on accessories



new Submersible Pump Controller Panel

Salient Features

- Range - 5HP to 60HP (Star Delta) in 2 Models (Deluxe & Standard)
- Control Voltage - 1 Phase (130 to 290V) or 3 Phase (280 to 440V)
- Short Circuit Protection - MCB/MCCB (10kA) in Deluxe Model
- Other Protections - Single Phasing / Over Load / Unbalance Voltages / Reversal of Phases
- Auto - Manual Bypass Switch
- Ammeter & Voltmeter with Selector Switch
- LED indications for R, Y, B Phases & Pump ON/OFF





HPL- AV On Load Changeover Switch



Salient Features

- Range: 63- 3150A, 4 Pole, 415V AC as per IS 13947 part 3/93 available in 6 frame sizes.
- Arc Chute plates to enhance contact life. 100% Neutral.
- Compact body of fiber glass, reinforced polyester resin.
- High Mechanical & Electrical life.
- Total safety with Terminal cover, Source Separator and Phase Barrier as standard feature.
- Flexibility for termination of supply.
- Mounting possible in both horizontal and vertical position.
- Available in Open Execution and Sheet Steel enclosures.
- Auxiliary contacts upto 2NO NC prewired.



HPL- AV Switch Fuse Changeover



Salient Features

- Range : 125A - 630A, 4 Pole, 415V AC as per IS 13947 Part 3/93.
- Arc Chute plates to enhance contact life. 100% Neutral.
- Body of fiber glass reinforced polyester resin.
- Auxiliary contacts upto 2NO NC prewired.
- Protection against over current and short circuit faults by fuses of high rupturing capacity of 80kA rms.
- Total safety with Terminal cover, Source Separator and Phase Barrier as standard feature.
- Available in Open Execution / Sheet Steel enclosure.



HPL- AV On Load Bypass Switch



Salient Features

- Range : 125A - 1600A, 4 Pole, 415 V AC as per IS 13947 Part 3/93.
- Arc Chute plates to enhance contact life. 100% Neutral.
- Switch is designed for specific need in IT industries where UPS and Servo stabilizer provides main source of supply.
- Auxiliary contacts upto 2NO NC prewired.
- Available in Open Execution / Sheet Steel enclosure
- Total safety with Terminal cover, Source Separator and Phase Barrier as standard feature.



AV Cubicle Load Break Switch



Salient Features

- Range : 63 - 3150A, 4 Pole, 415 V AC as per IS 13947 Part 3/93.
- Arc Chute plates to enhance contact life. 100% Neutral.
- Auxiliary contacts upto 2NO NC prewired.
- Suitable for DC-23A, 260V, application without any derating.
- Available in Open Execution / Sheet Steel enclosure.
- Total safety with Terminal Cover, and Phase Barrier as standard feature.



Automatic Transfer Switch –3XS

Salient Features

- Range 125A to 3200A
- A Compact Secured Load Transfer System
- A Simple, Adaptable Control Module
- Flexible Upgradeability
- Easy Maintenance



DPCOS

Digital Programmable Changeover Switch

- Range 125 to 630A, 4 Pole, 415V AC
- Broad operating range for voltage and frequency
- Remote operation and digital display of parameters
- Timer facility for changeover and generator operating
- Indication for fault condition
- Integrated system employing state of art technology

Add-on Remote Interfaces, & Controller for DPCOS

Controller Salient Features :

- Modular design, DIN rail mounting
- Provision for connection for remote interface unit
- Output relays for change over control
- Metering three phase supply of main source
- Metering two phase supply of emergency source
- Provides information of two sources on remote cable extension unit on a split screen.

Remote Interface Salient Features :

- Display availability of sources : EB / Generator
- Displays the voltage parameters of the available sources.



HPL - Motorised Changeover Switch

Salient Features

- Range : 125 -1600 A, 4P, 415V AC as per IS : 13947 Part 3 / 93
- Suitable for AMF panel / Automatic transfer switch application.
- Remotely operated
- Provides safety to the operator
- Facilitates auxilliary contacts for pre breaks/position indication
- Manual operation possible in case of emergency / failure of control supply
- Padlocking possible in 'OFF' position only
- Padlocking deactivates electrical control circuit
- Provides two stable position I or II





Automatic Transfer Switch - RTS

Salient Features

- Extensive power supply range +/- 30% versions 230VAC single power supply, 2x230 VAC dual power supply, 12 VDC, 24/48 VDC power supply
- Maintenance can be carried out under load simply by removing 4 screws.
- RTS incorporate supply without the need for additional wiring for dual power supply
- Range : 63A - 125A
- Compliance with IEC 60947-6-1



Modular Automatic Transfer Switch –ATyS M

Salient Features

- Range 63A to 160A on load ATS
- Control & Switching integrated ATS solution
- Fast Electrical Transfer Operation
- A dedicated interface, to control, measurement & metering



Universal Switches- SIRCO M and MV

Salient Features

- Range 16A to 160A Onload break Switch
- A versatile Switching concept
- Modular Presentation for your Modular application
- Front, Side, Toggle operation with 3/4/6/8 poles



RESYS M and P – Type A and B differential relays

Salient Features

- Protection of the installation against earth fault
- Protection of the equipment and machinery
- Preventive monitoring
- Complete range of accessories including toroid



HPL Elektra Rotary Switches

Salient Features

- Range : 6A to 63A
- Tested at CPRI for AC23A duty
- Finger protection as per VDE 0106
- Self lifting terminals
- Padlock devices and key operated as added feature
- Door interlocking and door coupler facility
- DIN rail mounting
- Specific application switches



LK - HPL Switch Disconnecter Fuse

Salient Features

- Range : 32A to 800A, TP, TPN & 4 Pole, 415V, 50Hz
- Conforms to latest IS 13947-3 / IEC 947-3
- Tested at CPRI, Bhopal for AC-23A duty
- Multiple Roller Contact Mechanism for long life and better performance
- Available in open execution and sheet steel enclosure
- Available in BS & DIN type HRC fuse links
- Excellent performance for capacitor duty applications also.



LK - HPL Load Break Switch (Isolator)

Salient Features

- Range : 32A - 3150 TP, TPN & FP, 415V, 50Hz
- Conforms to IS 13947-3
- Multiple roller contact mechanism for long life & better performance
- Available in open execution & sheet steel enclosure.
- Excellent performance for capacitor duty applications also.



HPL - HRC Fuse Link & Base-BS & DIN Type

Salient Features

- Range (DIN type - Fuse Link & Base) : 2 Amps to 630 Amps
- Range (BS Type Fuse Holder) : 20A to 125A
- Breaking capacity >80kA at 415V, AC, 50 Hz
- Front & Busbar Connection options for fuse Holders (of BS type).
- Conforms to IS : 13703 / 93 & IEC 269-1986
- Low Watt loss
- Tested at CPRI Bhopal



HPL - LT Switchgear

Salient Features

- Range : Rewireable switch Fuse Unit : 16 Amps to 320 Amps
- Fuse Switch Unit : 63 Amps to 800 Amps
- Isolators : 16 Amps to 800 Amps
- Changeover Switches : 16 Amps to 2000 Amps
- HPL Porcelain Fuse : 16Amps to 320 Amps
- Tested at CPRI Bhopal, IIT Kanpur, NTH Calcutta.
- Conforms to IS : 13947-3 / IS : 2086



new

HPL *bsafe* MCB

Salient Features

- Range : 0.5Amp - 125 Amp in SP, SPN, DP, TP, TPN, FP
- Specification : IS/IEC-60898-1
- Rated Voltage : 240/415V AC, 50Hz
- Rated Breaking capacity 10kA & Energy Limit Class 3
- Installation and removal of MCB without removing Busbar, as 3 position mounting clip makes it possible
- Bi-connect termination on both sides & snap fitting on accessories
- Contact position indicator (Red-Green)
- Padlock/Sealing facility : Contact position indicator red/green
- Cable termination capacity of wire upto 35sqmm
- Can be sealed with leads in the ON or OFF position



HPL Techno MCB

Salient Features

- Range : 0.5 to 80 Amps 240/415V, AC
- Available in SP, SPN, DP, TP, TPN & FP
- Breaking capacity 10kA
- Insulation voltage : 660V, frequency : 50/60Hz
- Finger Touch proof (IP20)
- Mid trip facility
- Protection against Short Circuit & Over Load
- Low let through energy & low watt loss
- Energy limiting class 3
- Trip free mechanism
- Available in B, C & D Curve
- Accessories :UV, Shunt trip, Auxiliary contact
- DC MCB available in SP & DP
- DC MCB voltage : 12V to 220V



Entire Range



Certified by BIS as per IS 8828/IEC 898 & CE certified



HPL Techno Isolator

Salient Features

- Range : 40, 63, 100 & 125 Amps
- Conforms to IS 13947-3
- Available in 2 P, 3P & 4 P version
- Finger touch proof (IP-20)



HPL Techno RCCB

Salient Features

- Range: 25 - 80Amp, 2 Pole & 4 Pole Version
- Sensitivity: 30mA, 100mA, 300mA
- Conforms to IEC / EN: 61008 & IS:12640
- Dedicated earth leakage protection.
- Voltage Rating 240/415V (AC), 50Hz.
- Protection against Electrocution, Short Circuit & Electrical fire
- Consistent performance, Compact & Space saving
- Auxiliary Switch optional



HPL Automatic Changeover with Current Limiter (ACCL)

Salient Features

- Range : 0.6Amp - 10Amp in SPN.
- Specification : IEC - 60947-6-1.
- Rated Voltage : 240/415V AC, 50Hz.
- Microcontroller based DIN rail mountable with neutral Isolation.
- Inbuilt SMPS for low power consumption.
- Operational status indication through LED.
- Automatic generator on/off facility.
- Built-in time delay for fall safe changeover.



HPL Techno Changeover Switch

Salient Features

- Range : 25A, 40A, 63A
- Conforms to IS:13947/Part III , IEC:60947 - III
- Choice of 2 Pole & 4 Pole versions
- Voltage Rating 240/415V (AC), 50Hz.
- Front Operation with three stable positions I-O-II
- Isolator at middle position
- DIN Rail Mountain facility



HPL Rakshak MCB

Salient Features

- Range: 6 to 63 A
- Available in SP, SPN, DP, TP, TPN & FP
- ISI marked & conforms to IS:8828 / IEC 898
- Protection against Short Circuit & Over load
- DIN rail mounting facility
- Finger Touch proof(IP-20)
- Flame retardant body
- Available B & C curve
- Breaking capacity : 6kA
- Voltage Rating : 240/415V
- Low watts loss hence energy saving
- Low let through energy



Entire Range



Certified by BIS as per IS 8828 / IEC 898



HPL Rakshak Isolator

Salient Features

- Range : 40 & 63 Amps
- Conforms to IS 13947-3
- Available in 2 P, 3P & 4 P version
- Finger touch proof(IP-20)



New Distribution Board

Salient Features

- Available in SPN and TPN versions
- Compact and aesthetically designed to meet the requirement of high end customer
- Intelligently designed to provide the maximum space for wiring of Db's
- Mounting of MCB's on Height adjustable DIN Channel
- Available with Cement Guard Protection
- Available in All New Packing



Distribution Systems Single Door

Salient Features

- SPN & TPN Versions.
- Distribution Systems in 4 to 16 ways
- Aesthetically designed
- Fitted with DIN channel, Bus Bar, Neutral Link Bar, Earth Bar, Inter connecting cables with copper thimble
- Can be mounted on surface / flush



Distribution Systems Double Door

Salient Features

- User friendly, Aesthetically designed, available in EX & DX series Distribution Systems in 4 to 16 ways
- SPN & TPN Versions.
- Bus Bar rating up to 200 Amp
- Fitted with DIN channel, Bus Bar, Neutral Link Bar, Earth Bar, Inter connecting cables with copper thimble
- Complete range of DB's with Double punched knockout to facilitate different size cable glands
- TPN DB's fitted with detachable gland plates at the Top & Bottom with double knock-out
- Double Door DB's in flush mounted design



Consumer Unit - Double Door

Salient Features

- Aesthetically designed Single phase distribution systems
- Painted with the latest powder coating technology for long lasting surface finish
- Available with transparent plastic cover



HPL Vertical Distribution Systems

Salient Features

- Aesthetically designed, good looking & superior DB's with latest style
- Fitted with Bus Bar, Shorting Links, Neutral Bar & Earth Bar
- Compact design having complete shrouding all over the inter connecting links
- With provision of ELCB along with TPN/FP Isolator as incomer
- Suitable to use as SP/DP/TP/TPN outgoing
- Available with MCCB as incomer
- Available in Single Door & Double Door



HPL Phase Selector Distribution Systems

Salient Features

- Compact distribution system
- Convenient mounting and operation
- Flexibility to use MCB's and ELCB/ELMCB
- Fitted with : DIN channel Bus Bar NL bar 3 Nos.
- Phase changeover switches duly wired (except for MCB's and ELCB's)



Distribution System with Cement Guard

Salient Features

- Available in Single & Double Door DX Distribution Systems
- Distribution Systems in 4 to 16 ways
- Aesthetically designed
- Fitted with DIN channel, Bus Bar, NL Bar, Earth Bar,
- Inter connecting cables with copper thimble
- Can be mounted on surface / flush



HPL Plug & Socket Distribution Systems

Salient Features

- Range : SP - 10 - 20 A
: TP - 20 - 30 A
- Provision for SP/SPN/DP/TP MCB
- Fitted with indicating light
- CRCA powder coated DB
- Elegant Flush mounting design



Non Retrofit (SU/DU/T4)

Salient Features

- Single ended 2 Pin G23/G-24d-1/G-24d-2 & G-24d-3 bases with integrated starter.
- Single ended 4 Pin 2G7/G24q base.
- Available in colours 6500, 4000 & 2700°K.
- Range in 5W, 7W, 9W, 10W, 11W, 13W, 18W & 26W.
- Applicable to dimmer operation.
- Can be connected to almost any kind of power supply.
- Slim and compact, fits in most standard & narrowest fixtures.
- Eight times more life than the normal GLS bulbs.
- High luminous efficacy and excellent colour rendering.



Non Retrofit (SU/T5)

Salient Features

- Single ended 4 Pin 2G11 base.
- Available in colours 6500, 4000 & 2700°K.
- Range in 18W & 36W.
- Applicable to dimmer operation.
- Can be connected to almost any kind of power supply.
- Eight times more life than the normal GLS bulbs.
- High luminous efficacy and excellent colour rendering.



Regular Retrofit (T4)

Salient Features

- Compact lamp with inbuilt electronic control gear.
- Single ended with B22d & E27 bases.
- Available in colours 6500, 4000 & 2700°K.
- Range in 11W, 15W, 20W, 23W, 25W, 27W, 30W & 35W
- Ideal replacement for normal GLS bulb.
- Flicker free instant start.
- Six times more life than the normal GLS bulb.
- High luminous efficacy and excellent colour rendering.



Mini Retrofit (T3)

Salient Features

- Super compact lamp with inbuilt electronic control gear.
- Single ended with B22d, E27 & E14 bases.
- Available in colours 6500, 4000 & 2700°K.
- Range in 5W, 8W, 11W, & 14W
- Ideal replacement for normal GLS bulb.
- Flicker free instant start.
- Six times more life than the normal GLS bulb.
- Fits in to the most compact Down & Up lights.
- High luminous efficacy and excellent colour rendering.



Spiral Retrofit (T4)

Salient Features

- Compact lamp with inbuilt electronic control gear.
- Excellent light distribution.
- Single ended with B22d & E27 bases.
- Available in colours 6500, 4000 & 2700°K.
- Range in 15W, 20W, 23W, 25W, 27W, 30W & 35W
- Ideal replacement for normal GLS bulb.
- Flicker free instant start.
- Six times more life than the normal GLS bulb.
- High luminous efficacy and excellent colour rendering.



Mini Spiral Retrofit (T3)

Salient Features

- Super compact lamp with inbuilt electronic control gear.
- Excellent light distribution.
- Single ended with B22d, E27 & E14 bases.
- Available in colours 6500, 4000 & 2700°K.
- Range in 7W, 9W, 11W & 15W.
- Ideal replacement for normal GLS bulb.
- Flicker free instant start.
- Six times more life than the normal GLS bulb.
- Fits in to the most compact Down & Up lights.
- High luminous efficacy and excellent colour rendering.



G 24 Lamps

Salient Features

- Single ended 2 pin G24 with in build electronic control gear
- Available in colors 6500 & 2700 °k.
- Range in 11W, 15W in four U and 15W, 18W in Spiral
- Applicable to dimmer operation
- Compact lamps fits in most standard fixtures
- High Luminous efficacy and excellent color rendering



Higher Wattage Regular/Spiral Retrofit (T5)

Salient Features

- High Power Factor ≥ 0.9 .
- Compact lamp with inbuilt electronic control gear.
- Single ended four tube, with B22d, E27 & E40 bases.
- Available in colours 6500, 4000 & 2700°K.
- Range in 45W, 65W & 85W (in both 4U & Spiral).
- Flicker free instant start.
- Six times more life than the normal GLS bulb.
- High luminous efficacy and excellent colour rendering.



LED GLO

Salient Features

- Range available : 3W - 20W
- Colour Available : Warm White & Cool White
- Mercury Free and Hazardous Materials
- High Brightness
- Upto 90% Energy Saving Compared with GLS Lamp



Decor Ball / Deco Candle

Salient Features

- B22 & E27 base
- Available in color 6500 & 2700°k.
- Range in 1W in Ball & 0.5W in Candle
- Ideal for general lighting
- Flicker free, Instant Start
- Life upto 25000 burning hours.



Indus LED Tube

Salient Features

- High efficiency Led's for optimum light output and savings in power.
- High quality PC cover for LED linear lamp ensures soft and glare free lighting
- Specially designed aluminium housing for excellent Heat dissipation.
- Short circuit and surge protection for enhanced reliability and longer service life of driver
- Wide beam angle of 120° with efficacy over 90 Lm/W.



Led Spot Lamps

Salient Features

- Optics through designed lens offering narrow to medium beam distribution.
- Available in both GU 10 & 5.3 base caps
- Well designed housing including the extruded Aluminium heat sink
- Electronic driver with additional on board circuit protection features.
- Wide operating voltage range from 100 V – 285 V.

Consumer Lighting



new

Aries Plus LED

Salient Features

- Available in Range : 6W, 10W & 20W
- LED Lumen efficacy is > 120 Lm / W
- Upto 30% energy saving, compare to T5 FTL
- Available in 2700K, 4000K & 6500K
- Decorative end Caps.
- Aluminum Housing



new

ONYX Plus LED

Salient Features

- Available in 6W, 12W, 15W & 18W
- High quality aluminum diecast housing
- Color Temperature 6500K/4000K/2700K
- Short Circuit & Open Circuit Protection On Driver.
- Highly Efficient Constant Current Led Drivers
- Diffused Light With Acrylic diffuser.
- Instant light with low running temperatures



Decorative Luminaries

Salient Features

- Surface and recessed mounted decorative fixture fitted with energy efficient lamps.
- Engineering plastic housing white in color .
- Fitted with opaque diffuser for diffused light and with Poly carbonate colored ring to enhance aesthetics.
- Used in offices, balconies, corridors etc.

Industrial Luminaries

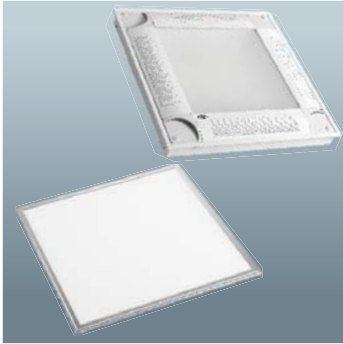


LED Highbay & Flameproof Wellglass

Salient Features

- Highly efficient heat sink designed to ensure prolong the life span of the LED.
- The reflector is made from high purity imported aluminium
- Efficiently designed constant current driver with wide ranging input voltage 100V to 285V
- Significantly lower running cost as compared to conventional fixtures.

Commercial Lighting



LED Panel Lighting

Salient Features

- Elegantly designed housing for ensuring optimum light output with longer life
- Ideally suited for ceiling areas with fall ceiling applications.
- Inbuilt led drivers with operating range of 100–285V
- On board Short circuit and surge protection for enhanced reliability and longer service life of driver
- High quality Diffuser for LED linear lamp ensures soft and glare free lighting



LED Matrix

Salient Features

- Available in Range : 6W, 12W & 18W
- High Quality Poly carbonate housing
- Short Circuit and open Cricuit protection on driver
- Diffuse Light with Acrylic PC

**new**

Solace & Zoom COB LED

Salient Features

- Optics through designed lens offering narrow to medium beam distribution.
- Well designed housing including the extruded Aluminium heat sink.
- Separate replaceable electronic driver.
- Wide operating voltage range from 100V – 285V.
- Ideally suited for retail lighting with surface & recess applications.



Accessories

Ballasts :

- Electromagnetic Ballast (Copper wound open construction ballast) The VPIT Magnetic Ballasts are available for Compact Fluorescent Lamps (CFL) ranging from 9W to 36W Fluorescent Tubular Lamp (FTL) ranging from 18W to 40W High pressure Sodium vapor lamp / metal Halide Lamp range from 70W to 400W.
- Electronic Ballast are available for CFL ranging from 9W to 36W & FTL ranging from 18W to 36W.



LED Street Light

Salient Features

- Available voltages – 15W to 160W
- LED efficiency - > 130 lumen / watt
- Lamp life – 50,000 burning hours with L 70 criteria
- CRI > 80, PF > 0.95 THD < 10%
- Confirms LM 79 & LM 80
- Special Feature : Reverse EMI protection provided / over voltage protection upto 300V / surge protection upto 6kV.



LED Flood Light

Salient Features

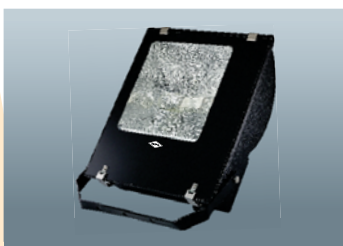
- Available voltages – 15W to 160W
- LED efficiency - > 120 lumen / watt
- Lamp life – 50,000 burning hours with L 70 criteria
- CRI > 80, PF > 0.95 THD < 10%
- Confirms LM 79 & LM 80
- Special Feature : Reverse EMI protection provided / over voltage protection upto 300V / surge protection upto 6kV.



Street Light MHL

Salient Features

- Available in 70W, 150W, 250W & 400W.
- Single piece die cast Al. LM-6.
- Heat resistance toughened glass
- Confirm IP-66.
- Applications: Airport, Approach Roads, A1, A2 Classifications Roads etc.



Flood Light

Salient Features

- Available in 70W, 150W, 250W & 400W MH/SV lamp.
- Pressure dia cast Al LM-6.
- Tempered protective toughened glass.
- Confirm IP-65.
- Application : Construction site, Industrial Area & Parks etc.



Flood Light

Salient Features

- Available in 2x250W & 2x400W MH/SV lamp.
- Pressure dia cast Al LM-6.
- Tempered protective toughened glass.
- Confirm IP-65.
- Applications : High Mask, Stadiums & Industrial Area etc.

Metal Halide Lamps

MH lamps are available in Double Ended & Single Ended versions. Double ended lamps are available in 70w & 150w. Single Ended lamps are available in Elliptical (ranging from 70w to 400w) & Tubular version (ranging from 35w to 400w). These lamps offers efficacy upto 80-85 lumens / watt.



G12 Single Ended, 35, 70,150W

Salient Features

- UV Shield
- Better Colour Rendering
- Longer Life
- Highly Efficient
- Precise optical control



Double Ended, 70,150W

Salient Features

- UV Shield
- Better Colour Rendering
- Longer Life
- Highly Efficient
- Precise optical control
- Faster Warm up & Hot
- Re-strike



Single Ended-Elliptical, 70,150, 250, 400W

Salient Features

- UV Shield
- Better Colour Rendering
- Better Cold Starting
- Superior Lumen Maintenance
- Faster Warmup & Hot
- Re-strike



Single Ended-Tubular, 70,150, 250, 400W

Salient Features

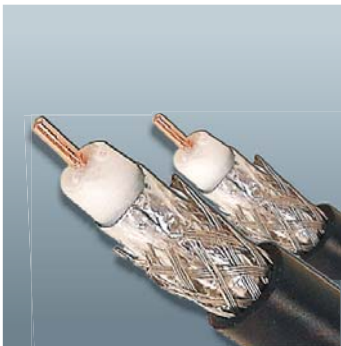
- UV Shield
- Better Colour Rendering
- Better Cold Starting
- Superior Lumen Maintenance
- Faster Warmup & Hot
- Re-strike



Domestic & Industrial Wire

Salient Features

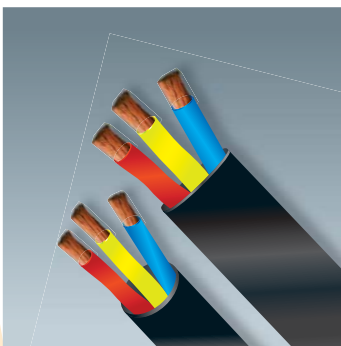
- Range : 0.5 to 400 Sq. mm in Single Core & Multicore Available in FR / FRLS / HR / ZHFR insulation
- Conforms to IS : 694
- Multi strand 100% Pure annealed Electrolytic copper conductor
- Bunching of copper in uniform lay & diameter
- High insulation Resistance
- Double insulation with ultra thin layer



Co-axial Cable /CCS

Salient Features

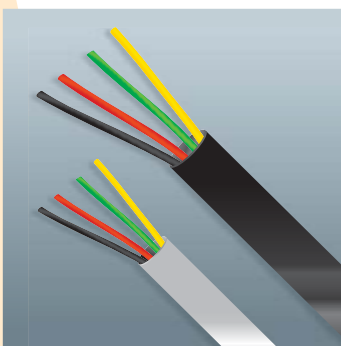
- Range : RG-59, RG-6, RG-11
- Solid / Stranded bare annealed electrolytic grade copper
- PE foam and solid
- Copper ABC / CCS, ATC / AL. Wire braiding / aluminum foiling / taping
- Specially formulated PVC
- RG and UR series BS : 2316 / MIL-C-17



Submersible Cable

Salient Features

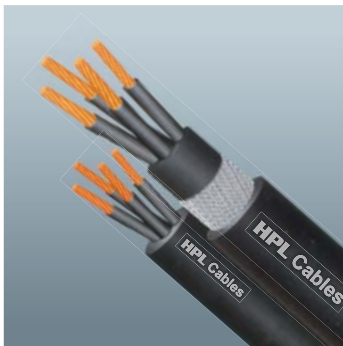
- Range : 1.0 to 50.0 Sq. mm three core flat cable.
- Stranded bare annealed electrolytic grade copper conductor
- Specially formulated PVC compound (Type A & ST-1)
- Round submersible cable can be specially asked for
- Conforms to IS:694



Telephone Cable

Salient Features

- Range : 0.40 / 0.45 / 0.50 / 0.60 mm dia conductors available up to 50 pairs.
- Bare / tinned annealed copper Conductor PVC / PE Insulated
- Individual / Overall Shielded with aluminium tape (Polyester backed)/ Melinex Tape
- TEC Specification G/WIR 06/02.



Control Cable

Salient Features

- Range : 1.5 & 2.5 Sq. mm upto 24 Core, 1100 Volt Grade conforming to IS: 1554-1/1988 & IS 7098-1/1988.
- Solid/ Stranded 100% pure annealed Electrolytic copper conductor.
- Insulation PVC/XLPE/HR
- Armourd/ Unarmourd- GI Round wire/Flat Strip.
- Outer Sheath PVC (ST-1 & 2) /FRLS/HR/ ZHFR.
- Heavy Duty Performance.
- Best combination safety.
- Efficiency & economy.
- Use in Process Control, Communication and Panel control.



Instrumentation Cable

Salient Features

- Range : 0.5 Sq. mm to 2.5 Sq. mm Conforming BS 5308-I & II
- Shielding: Core/Pair/Triad/Quads.
- Armourd / Unarmourd.
- ABC/ATC, Solid/Standard 100% pure annealed Electrolytic copper conductor.
- Low attenuation and cross talk.
- High speed performance.
- For Analog & Digital Signals.
- Use in Digital Control, measuring & Communication systems.



Networking Data Cable (CAT - 5e & 6e)

Salient Features

- Range : 4-Pair UTP CAT-5e and CAT-6e Cable.
- Solid 100% pure annealed Electrolytic copper conductor.
- Low attenuation and cross talk.
- Low structural return loss.
- High speed performance.
- Gigabite Ethernet
- Suitable for Voice, Data, Video.
- 100 ohm impedance cable.



Fire Survival Cables

Salient Features

- Range : 0.5 Sq. mm to 2.5 Sq. mm Conforming BS: 7846 600/1000 Volts
- Shielding: Core/Pair/Triad/Quads with Mica/glass fire barrier tape.
- Armourd / Unarmourd.
- ABC/ATC, Solid/Standard 100% pure annealed Electrolytic copper conductor.
- For Analog & Digital Signals.
- Operating Temperature -10°C +900 C
- Fire Tests Bs6387 C W & Z BS 8491



Modular Switch

6A/10A/20A/32A- DP switch

Salient Features

- ROHS Compliance
- Captive Screws
- Dual Protection for spark shield
- High Grade Flame Retardant Engineering Plastic
- Silver Nickel contacts for trouble free operations



Socket

6A-5 Pin / 6A-2 Pin & 6-16A Pin Sockets
10-13A Universal Sockets

Salient Features

- Hardened Phosphorus bronze contacts
- High Grade Flame Retardant Engineering Plastic
- Spring Loaded Protective safety shutter.

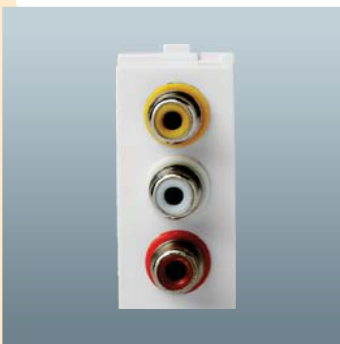


Controllers

Fan Regulators - 1 - 2 Module
Dimmer - 400w/600w/1000w

Salient Features

- No radio Frequency interference
- High Grade Flame Retardant Engineering Plastic
- Good Ventilation for proper heat dissipation
- Easy to remove and install
- No Humming noise.



Connectors

RJ-11,2-Line/4- Line/2 - Line twin jack
RJ - 45/RJ-45 Cat -6/Audio- DVD / Television Socket

Salient Features

- Contact Material Phosphorus Bronze
- Gold Plated
- User Friendly Shutters
- Easy to remove and install



Speciality Products

- Surge Protector
- Movement Detector Ceiling Mounted
- Motion Sensor Wall Mounted
- Remote Switch Standalone
- Universal Remote switch for lighting
- Energy Saving Switch



Smarters Accessories

- Spike Guard
- Extension Cord
- Remote Bells
- Batten / Angle Holder
- Multi Plugs
- Plug Tops 6A/16A
- International Travel Adaptors



Tuff (Solo Switch)

Salient Features

- Vo Grade engineering Plastic
- Tested upto 2 lakh operations

Branch Offices:

AHMEDABAD

B-802, Iscon Elegance,
Nr. Prahalad Nagar Corner,
Opp. Karnavati Club,
S.G. Highway- 380 051
Ph.: 079 - 66168835, 66168836
Fax : 079-66168837
E-mail: ahmedabad@hplindia.com

BANGALORE

No.2D, 11nd Floor, Farah Winsford,
133, Infantry Road, Bangalore - 560 001
Ph.: 080-22863068 Telefax : 080-22863069
E-mail: bangalore@hplindia.com

BHUBANESWAR

N3-135, IRC Village, Nayabali,
Behind Od Sai Baba Temple,
Bhubaneswar-751 012
Ph.: 0674-6538229 Telefax : 0674-2550826
E-mail: orissa@hplindia.com

CHANDIGARH

S.C.O. 54, 2nd Floor, Sector - 26,
Madhya Marg, Chandigarh - 160 019
Telefax.: 0172-5077815, 5049425
E Mail : chandigarh@hplindia .com

CHENNAI

"Amar Sindur" S-4, 2nd Floor,
No.-43, Pantheon Road, Egmore,
Chennai-600 008
Ph.: 044-28551530, 28551537
Fax : 044-42638243
E-mail: chennai@hplindia.com

COCHIN

2nd Floor, A.K.S. Mahal Building,
XL/7813J, Achutha Warriar Lane,
M.G.Road, Ernakulam, Cochin-682 035
Telefax : 0484-2354595
E-mail: cochin@hplindia.com

COIMBATORE

Designer Complex,
Door No.130, C Part-2, 2nd Floor,
Dr. Nanjappa Road, Coimbatore - 641018
Ph.:0422-4393995
E-mail : coimbatore@hplindia.com

DEHRADUN

R/09/4/6, 1st Floor, East Canal Road,
Dehradun-248001
Ph.: 0135-2710567, 2710587
E-mail: Uttranchal@hplindia.com

GUWAHATI

Rajgarh Road, Opposite China Town
Restaurant Guwahati - 781 003
Ph.: 0361-2450889
E-mail: guwahati@hplindia.com

HUBLI

9-10, 1st Floor, Vernekar Plaza,
Desh Pande Nagar, Hubli-580029
Ph.: 0836-4251463
E-mail : hubli@hplindia.com

HYDERABAD

No. 7-1-58, flat No.403, 4th Floor,
Concourse Building, Green
Lands Road, Hyderabad - 500 016
Ph.: 040-23740567, 66687878, 66773117
Telefax: 040-40035959
E-mail: hyderabad@hplindia.com

INDORE

203, Millinda Manor 2 RNT Marg,
Near Ravindra Natya Grah, Indore- 452 001
Ph.: 0731-4280525 Fax: 0731-2015658
E-mail: Indore@hplindia.com

JABALPUR

RAJUL LANDMARK
1st Floor Shop No.-101
Opposite Jabalpur Hospital
Russel Chowk, Jabalpur-482002
Ph.: 9407154296
E-mail : mishra@hplindia.com

JAIPUR

512, 5th floor, Plot No. 8-9,
Corporate Park, Gopal Badi,
Ajmer Road Jaipur - 302 001
Ph. : 0141-4021035, 4018426
E-Mail: jaipur@hplindia.com

JAMMU

House No. 125, Sector-11,
Nanak Nagar, Jammu-180 004
E-mail: jammu@hplindia.com

KANPUR

17/14, 2nd Floor, Opposite Nanarao Park,
The Mall, Kanpur - 208 001 (U.P.)
Ph.: 0512-2316017 Telefax: 0512-2353743
E-mail: kanpur@hplindia.com

KOLKATA

69, Ganesh Chandra Avenue, India House
7th Floor, Block-C, Kolkata - 700 013
Ph.: 033-65394379 Fax :033-22252716
E-Mail: calcutta@hplindia.com

LUCKNOW

1st Floor, Jain Building, 14/A5,
Park Road Hazratganj , Lucknow
Ph.: 0522-4021687
E-Mail: lucknow@hplindia.com

LUDHIANA

698 - D , Model Town, Extn.,
Ludhiana-141 001
E-Mail : ludhiana@hplindia.com

MUMBAI

2H, Rushabh Chambers 2nd Floor,
Off-Makwana Road, Near Rubi Hotel Marol
Andheri East Mumbai - 400 059
Ph.: 022-61830810-20 Telefax: 022-28528181
E-mail: mumbai@hplindia.com

NAGPUR

Jagtap House, Plot No. 07,
1st Floor, Ganesh Gruh Nirman Society,
Near Ganesh Mandir, Ring Road, Pratap Nagar,
Nagpur - 440022, Ph.: 0712-2222988
E-mail: nagpur@hplindia.com

PATNA

Bhagat Sadan, Sahi Lane,
S. P. Verma Road, Patna - 800001 (Bihar)
Ph. : 0612-2216500
E-mail: patna@hplindia.com

PUNE

15, 4th Floor The Millennium
Apartment Anove Krishna Pearls,
Nal Stop Karve Road, Pune - 411 004
Ph.: 020-66004041, 42, 43, 44, 45
Fax: 020-66004046
E-mail: pune@hplindia.com

RAIPUR

1st Floor, Near Holy Heart School
Chattisgarh College Road, Civil Line,
Raipur (C.G.)-492 006 Ph.:0771-6541590
E-mail : raipur@hplindia.com

RANCHI

203, Mahalaxmi Complex, Link Tank
Road, Near Bargain Bazar, 2nd Floor
Ranchi - 834 001 Telefax : 0651-2206144
E-mail : ranchi@hplindia.com

VADODARA

409/410, Silver Oak Complex,
Near Sainik Park Char Rasta,
Productivity Road, Akota,
Vadodara - 390020 Gujarat
Ph.: 0265-2341747 Fax:0265-2352107
E-mail : baroda@hplindia.com

VIJAYAWADA

D.No.-29-37-137, 2nd Floor,
G. R. Plaza, Beside Canara Bank,
Eluru Road, Vijayawada-520 002
Ph.: 0866-6622291 Fax:0866-2442275
E-mail : vijayawada@hplindia.com

VIZAG

B.K. Towers, 49-34-1/63, 3rd Floor
Akka Yyapalem Main Road, NH-5 Junction,
Vizag-530 016 (A.P.)
Ph.: 0891-2794506, 6461730
Fax:0891-2743531
E-mail : vizag@hplindia.com

Resident Offices:

Agartala	Balasure	Davangere	Jalandhar	Mangalore	Rajkot	Tirupati
Agra	Belgaum	Durg	Jharsuguda	Meerut	Rourkela	Trichy
Allahabad	Berhampur	Goa	Jodhpur	Moradabad	Salem	Trivandrum
Anantpuram	Bhilai	Gorakhpur	Kanyakumari	Mysore	Siliguri	Udaipur
Aurangabad	Bhopal	Gulbarga	Kolhapur	Nagercoil	Silchar	Vapi
Amravati	Bilaspur	Jabalpur	Kota	Nasik	Surat	Varanasi
Akola	Bijapur	Jabli	Ludhiana	Patiala	Sholapur	Vellore
Angul	Calicut	Jammu	Madurai	Patna	Srinagar	
Bareilly	Cuttack	Jamshedpur	Malda	Pondicherry	Sambalpur	

Works:

- Gurgaon - Haryana
- Sonapat - Haryana
- Noida - Uttar Pradesh
- Jabli - Himachal Pradesh
- Panipat

Customer Cell : 011-23235274



HPL Electric & Power Pvt. Ltd.

Corporate & Marketing Office : 1/21, Asaf Ali Road, New Delhi - 110 002,
Phone: 91-11-23234411 Fax: 91-11-23232639 E-mail: hpl@hplindia.com
Export Office : 91-11-23234811, 23236811 E-mail: gsm@hplindia.com

www.hplindia.com