

Switchgear, Lighting & Protection Systems



HPL
a profile
2014



HPL's vision of creating a niche, as a major player in India Electrical Industry with commitment to state-of-the-art technology & world class products.

HPL Group possess nine most modern manufacturing units, ISO 9001 : 2000 certified located at Gurgaon, Kundli, Sonapat, Noida, New Delhi and Himachal Pradesh having 5,00,000 sq. feet covered area to manufacture products confirming to International and India standards.

HPL Products Profile has the following Strategic Business Units :

- **LV Switchgears**
- **LV Protection Devices**
- **Metering and Energy Management Systems**
- **Lighting**
- **Luminaires**
- **Wires & Cables**
- **Electrical Wiring Accessories**

HPL Products are tested at CPRI, ERDA, ERTL, NPL etc. according to Indian Standards, whereas MCB's Rewireable Switches & Electronic Energy Meters carry ISI marking. Further HPL products have approvals from CPWD state PWD's, MES, BSNL & many more Institutional users.

HPL Group with Head Office at New Delhi has extensive Sales & Marketing Network of 69 Branches, over 1500 Authorised Dealers and 18000 Retailers across country, who are committed to provide solutions and services to customer's delight. HPL is also exporting its products to Middle East, SAARC and European Countries.



الشركة السعودية للكهرباء
Saudi Electricity Company



Contents

Pages

Metering

1-8

Diris Digital Multifunction Energy Meter
Emfis Digital Multifunction Panel Mounted Meters
Panel Mounted Meter For LT & HT Applications
Power Factor Controller
èbrit : Digital Panel Meter
Single & Three Phase Electronic Energy Meter
Trivector Meter / Prepaid Meter
Meter Box

Industrial Products

9-15

Air Circuit Breaker
intelliPROTECT - Range of ACBs
HPL - MCCB
TAB : Series of MCCBs
Motor Duty - MD Series of MCCBs
Double Break High Breaking Capacity MCCBs
Load Guard - Range of MCCBs
MCCB Distribution Panel
MCCB Enclosure
IntelliCONTROL - Range of Controlgear
Contactors, Overload Relays, MPCB,
Submersible Pump Controller Panel
Switchgear : HPL
Changeover Switches
Onload By Pass Switches
Load Break Switches
Automatic Transfer Switch (ATyS)
Digital Programmable Changeover Switch
Motorised Changeover Switch
Automatic Transfer Switch (ATyS S/Sd)
Modular Automatic Transfer Switch (ATyS M)
LBS - Sirco M and MV
Earth Leakage Relays (Resys)
Elektra Rotary Switches
LK SDF/Load Break Switch
HRC Fuse Links, Base & Holders
Rewireable / LT Switchgears

Distribution / Building Products

16-19

HPL bsafe MCB
HPL Techno MCB / Isolator/ RCCB
HPL Techno Changeover Switch
Rakshak MCB / Isolator
Distribution Systems

HPL Lighting & Luminaires

20-26

Retrofit & Non Retrofit
Mini Retrofit / Spiral Retrofit
Mini & Full Spiral Retrofit
Higher Wattage Retrofit
T5 - FTL
G 24 Lamps / LED Lamps
Luminaries / Outdoor Lighting

Wires & Cables

27-28

Domestic & Industrial Wire
Co-axial Cable / Submersible Cable
Telephone Cable / Control Cable
Instrumentation Cable
Networking Data Cable (CT - 5e & 6e)
Submersible Winding Wire

Electrical Wiring Accessories

29-30

smART - Modular Switch
SMARTER - Accessories
TUFF - Solo Switches





On Load Changeover & Load Break Switches



- Conforms to IEC:60947-3
- from 63A to 3150A
- Fully visualized breaking
- It is very compact in size and hence helps in saving space in the enclosures, panels etc.
- Available in Open execution & Steel sheet Enclosure.
- Any pole can be used as Neutral pole... true 4 pole switch
- The Arc Chamber is specially designed with arc chute plates to enhance the life of the moving & stationary contacts thereby increasing the life of the product.
- Source Separator is used to isolate two incoming supplies and to eliminate possibility of flash over between two supplies.
- Click fit type Terminal shrouds are provided for a complete touch proof design and prevent accidental touching of live terminals. They are click fit type.
- Inter-phase barriers are provided for additional safety to eliminate possibility of inter-phase short circuit.
- Black Handle Padlockable in I - O - II position



emfis - Digital Multi-Function Meter

Salient Features

- -/5A in class 1.0 accuracy
- Suitable for 3 Phase 4 Wire LT Network.
- CT Primary Programming upto 6000A (For direct reading)
- Three line LCD backlit display.
- Displays: Voltage, Current, Frequency, Power Factor, Power, & Trivector Energy.
- Three push buttons on the front panel for programming and scrolling.
- Maximum demand in kVA / kW with integration Period of 30 Minutes (Optional)
- RS485 Communication (Optional)



emfis HT - Digital Multi-Function Meter

Salient Features

- Programmable CT secondary for 5A & 1A
- Suitable for HT 3Phase 3 Wire application
- Display in Scroll Mode: Active Energy kWh, Apparent Energy kVAh, Reactive Energy kVArh, Phase to Phase voltage, Instantaneous, Average, Maximum and total Current, Active Power kW, Reactive Power kVAh and Apparent Power kVA, Total Instantaneous Power Factor, Frequency
- Rs485 Communication (Optional)



emfis - vif Digital Multi-Function Meter

Salient Features

- -/5A in class accuracy 1.0
- Suitable for 3 Phase 4 Wire LT Network
- CT Primary Programmable upto 6000A
- Backlit LCD Display 17 parameters including: Phase to Phase voltage, Phase to Neutral Voltage, Instantaneous Current, Average Current, Maximum Current, Total Current, Frequency



emfis - vie Digital Multi-Function Meter

Salient Features

- Three Line Backlit LCD Display
- Optically Isolated Energy Pulse Output
- RS485 MODBUS Communication
- Provision for Special Screens Shots
- CT Secondary -/1A for -/5A (site selectable)
- Additional Parameters Power On Hour / Run Hours



emfis - vifp Digital Multi-Function Meter

Salient Features

- -/5A in accuracy class 1.0
- Suitable for 3 Phase 4 Wire LT Network
- CT Primary Programmable upto 6000A
- Three Line Backlit LCD display.
- Measures & Displays 39 parameters including : Phase to Phase Voltage, Phase to Neutral Voltage, Instantaneous, Average, Maximum and Total Current, Active Power kW, Reactive Power kVAR and Apparent Power kVA, Instantaneous and Total Power Factor, Frequency



emfis - vifpe Digital Multi-Function Meter

Salient Features

- -/5A in accuracy class 1.0
- Suitable for 3 Phase 4 Wire LT Network
- CT Primary Programmable upto 6000A
- Three Line Backlit LCD display.
- Measures & Displays 40 Parameters including : Active Energy, Phase to Phase Voltage, Phase to Neutral Voltage, Instantaneous, Average, Maximum and Total Current, Active Power kW, Reactive Power kVAR and Apparent Power kVA, Instantaneous and Total Power Factor, Frequency
- RS 485 Communication (Optional)



emfis - plus Digital Multi-Function Meter

Salient Features

- Suitable for 3 Phase 4 Wire LT Network.
- Three line LCD backlit display.
- Displays: Voltage, Current, Power Factor, Power, Trivector Energy & THD.
- Last 6 month history parameters for kWh, kVAh, kVArh (lag, lead) & MD through Communication
- Relay Output for V, I, Total kW, Total kVA, F, kW MD & kVA MD.
- Last 30 days Load Survey.
- Last 10 days Occ. / Res. event for each relay 1 & 2 through communication



emfis DC - Digital Multi Function Meter (DC Application)

Salient Features

- Displays : Voltage, Current, Power, Energy
- RS485 MODBUS RTU Communication (Optional)
- Password Protected Programming
- Backlit LCD type Display (16 X 2 line Dot Matrix)
- 6 Months History for kWh, MD kW, Channel Peak Load available on communication
- Reverse Shunt Connection Indication
- Reverse Voltage Connection Indication
- Shunt Disconnection Indication



Dual Source Meter

Salient Features

- One Meter records Active Energy of two different sources : Mains & Generator
- Backlit LCD display
- Suitable for 3 Phase 4 Wire Network
- Accuracy class 1.0
- Rs485 MODBUS communication (optional)



Dual Source Plus

Salient Features

- One meter records Active Energy of Two Sources
- Measures over 45 Parameters including Voltage, Current, Frequency, kW, kVA; kVA, PF, Active Energy for Mains, Generator and Total, MD in kW and kVA for Mains and Generator separately with date and time, Run Hours, Power on Hours
- Relay outputs for V, I, kW, kVA, F, kW Demand, kVA demand
- Last 6 months history parameters for kWh and MD through communication
- Last 10 event logging for Mains / Generator switching



Three Phase Panel Mounted Meter with LCD Display (CT 2E)

Salient Features

- CT Operated, -/5A in class 1.0 accuracy
- CT Primary programmable upto 6000A (For Direct reading)
- No separate Auxiliary supply required
- Low Power Consumption less then 1 watt per phase
- Pulse Output
- Anti tamper features



Three Phase Panel Mounted Meter with LCD Display (CT-2EA)

Salient Features

- Backlit LCD display.
- CT operated -/5A in class 1.0 accuracy.
- RS 485 communication
- CT Primary programmable upto 6000A (For direct reading).
- Pulse output.



Three Phase Panel Mounted Meter with Counter Display (CT 2M)

Salient Features

- CT Operated, -/5A in class 1.0 accuracy
- Available upto 800/5A (for direct reading) (*Ref. Catalogue for available CT Ratio*)
- No separate Auxiliary supply required
- Low Power Consumption less then 1 watt per phase
- Pulse Output
- Anti tamper features



èbrit : Single & Three Phase Ammeter

Salient Features

- Push button based site programming of CT Ratio
- Bright 4 Digit 14mm LED display
- Colour indication for R, Y & B phases
- Universal Auxiliary Supply : 80 to 300V AC/DC
- Same model for A & kA
- Auto scroll facility & scroll lock facility (For Three Phase meter)



èbrit : Single & Three Phase Voltmeter

Salient Features

- Push button based site programming of PT Ratio
- Network selection for Star (3 Phases 4 wire) and Delta (3phase 3 wire)
- Bright 4 Digit 14mm LED display
- Colour indication for R, Y & B phases
- Universal Auxiliary Supply : 80 to 300V AC/DC
- Same model for V & kV
- Auto scroll facility & scroll lock facility (For Three Phase meter)



èbrit : PF Meter

Salient Features

- Measurement range Zero Log Unity-Zero Lead
- Accuracy ± 0.01
- Log / Lead indication on the display
- Bright 4 Digit 14mm LED display
- Universal Auxiliary Supply - 80 to 300V AC/DC


êbrit : Kilo Watt Meter
Salient Features

- Push button based site programming of CT ratio.
- Available in accuracy class 1.0 & 0.5 (Maintained through out the measurement range.
- Measure range 0-3,000kW (Direct Measurement)
- Bright 4 Digit 14mm LED display.
- Universal Auxiliary Supply - 80 to 300V AC/DC.


êbrit : Frequency Meter
Salient Features

- Measurement range 40.00 - 99.99 Hz.
- Accuracy Class 0.2 (Maintained through out the measurement range.)
- Bright 4 Digit 14mm LED display.
- Universal Auxiliary Supply - 80 to 300V AC/DC.


êbrit : Power Meter
Salient Features

- Common Meter for kW, kVA and kVAr
- User selectable measurement of kW/ kVAr/ kVA
- Available in Class 0.5 & 1.0
- Sustained accuracy through out the range
- Universal auxiliary supply – 80 to 300 V AC/DC
- Push Button based site programming of CT Ratio
- Bright 4 Digit 14mm LED Display


HPL - Power Factor Controller
Salient Features

- Microprocessor based intelligent auto switching control.
- Automatic C/K and rated step adjustment.
- Automatic CT polarity correction.
- Display of power factor, current & total harmonic distortion of current.
- Programmable sensitivity.
- Last step can be used as alarm / fan output.
- Under / over voltage alarm, under / over compensate alarm & high harmonic distortion alarm.



Trivector Meter

Salient Features

- Range : LT-CT operated -/5A
CT/PT operated -/5A & -/1A for HT application
- Accuracy class 0.5 as per IS 14697/CBIP 88/IEC
- Logging & display for tamper data
- Measurement & recording of harmonic energy
- Communication : optical & hardwired
- TOD, load survey data, tamper information downloadable to CMRI through optical port



Three Phase Dual Source Energy Meter

Salient Features

- One meter records Active Energy of two source
- Optical port communication & RS485 MODBUS communication
- Mains / Generator selection through 240V AC
- Indication for current reversal tampering and phase availability on the LCD itself
- Indication on display to indicate the source in use
- Load survey / Tamper logging available
- Ratings available : -/5A CT Operated, 5-20A, 10-40A, 10-60A



Three Phase Electronic Energy Meter With LCD Display (Available with & without optical comm. port)

Salient Features

- Accuracy Class 1.0 as per IS13779
- ISI marked ratings: -/5A CT operated 5-30A, 10-40A, 10-60A
- All standard anti tamper features provided

Optional Features

- Optical communication port
- Logging and display of tamper data
- TOD, load survey, tamper information downloadable to CMRI through optical port
- Display in absence of power supply
- Suitable for AMR



Three Phase Electronic Energy Meter with Counter Type Display

Salient Features

- Range 5-20A, 10-40A, 10-60A, -/5A CT operated in class 1.0 accuracy as per IS 13779
- Instantaneous start
- Low power consumption saving more than 30%
- Meter records correct energy with same accuracy under reverse current connection
- LED indication for current reversal tampering provided
- Phase available indication provided
- Anti tamper features



Single Phase Electronic Energy Meter With LCD Display (Available with & without optical comm. port)

Salient Features

- Accuracy Class 1.0 as per IS13779
- ISI marked ratings: -/5A CT operated 2.5-10A, 5-20A, 5-30A, 10-40A, 10-60A
- All standard anti tamper features provided

Optional Features

- Optical communication port
- Logging and display of tamper data
TOD, load survey, tamper information downloadable to CMRI through optical port
- Display in absence of power supply
Suitable for AMR



Single Phase Electronic Energy Meter with Counter Type Display

Salient Features

- Range 2.5-10A, 5-20A, 5-30A, 10-40A, 10-60A, -/5A CT operated in class 1.0 accuracy as per IS 13779
- Instantaneous start
- Low power consumption saving more than 30%
- Tamper indications provided
- Phase available indication provided
- Anti tamper features



Transparent Pilfer Proof Meter Box

Salient Features

- Made of UV stabilized transparent polycarbonate/Flame retardant high grade engineering plastic.
- Unique arrangement for pilfer proof interlocking with hinge type boxes.
- Suitable for indoor and outdoor applications.
- Complying to IS:14772 and tested at CIPET.
- Sealable optical port provision on the cover of the meter box.
- Sealable push buttons provided on the box cover.
- Latest state of the art Inhouse tool room to design meter boxes for special application.
- Large capacity in house moulding for quick and bulk supplies.



Automatic Meter Reading Solution

Salient Features

- High speed GSM communication 4800/9600 bps
- For remote metering application



Prepaid Metering Solutions

Salient Features

- Available in Single Phase & Three Phase.
- Ratings available 10-16A in class accuracy 1.0
- As per IS 15884:2010.
- Available in dual source application
- Allow user to budget their consumption.
- Transparent system for utility and consumers.
- Manual meter reading, bill delivery not required.
- Supply disconnection is automatic for non payment customer
- Anti tamper features provided in the meter



LPR Zigbee Metering Solutions

Salient Features

- Available in Single Phase 5-30A & 10-40A
- Energy Meter Based on IEEE 802.15.4
- Centerlised data collection system
- Automated device address management
- Each meter aids transfer of data for self as well as neighboring meter
- Wire less commissioning, network scalability features



Air Circuit Breaker 630A - 6300A



Motor Assembly

intelliPROTECT
intelligent protection RANGE

Salient Features of HPL ACB

- Range : 630A – 6300A
- Operational voltage upto 690V & even above - on request
- Icu 65kA to 120kA at 500Vac
- Ics = 100% Icu throughout the range
- Ics & Icu at higher voltages - also available
- Icw : 50kA to 100kA (for 1 sec)
- Icw ratings for 2 sec & 3 sec – also available
- Customer oriented Trip Relay - with advanced measurement functions & communication functions
- Tested & certified as per IEC 60947-1, IEC-60947-2
- Suitable for Aluminum & Copper termination, Conversion of Terminal orientation at site
- Uniform height & depth across the range, very compact
- Wide range of front & easily fittable common accessories



intelliPROTECT - Air Circuit Breaker

Salient Features

- Range : 630A – 6300A
- Operational voltage upto 690V & even above - on request
- Icu 50kA to 120kA at 500Vac
- Ics = 100% Icu throughout the range
- Icw : 50kA to 100kA (for 1 sec)
- Customer oriented Trip Relay - with advanced measurement functions & communication functions
- Tested & certified as per IS/IEC 60947-2



TAB™ : Thermal Adjustable Breaker

Salient Features

- Conforms to IS/IEC 60947-2.
- Available in rated current from 20A-160A/63A-250A/250A-630A, 500A - 800A & in different breaking capacity (from 10kA to 65kA).
- Available in 1P, 2P, 3P & 4P Versions
- 4P version available with neutral fully protected.
- Adjustability-offers close protection to different load condition.
- Line load reversibility, Low let through energy.
- Wide range of internal and external accessories.
- ROHS Compliant.
- Also available for DC application.
- MCCB with Enclosure / Enclosure separately available.
- Single Pole MCCBs are available from 10A - 250A with breaking capacity from 10kA - 50kA, SP MCCBs from 63A-250A are available with thermal adjustable feature



Motor Duty MCCBs (MD Series)

Salient Features

- Available upto 22 kW / 30 HP in two frame.
- Breaking capacity - 25kA / 36kA.
- Clear indication of ON, OFF & Trip position.
- Low let through energy.
- For Special motor starting condition (Starting time beyond 10 Sec & other specific condition) - please contact us.



new Double Break High Breaking Capacity MCCBs

Salient Features

- Rated Current : upto 1250A
- No of Poles : 3 / 4
- Breaking Capacity (Icu) : Upto 100kA
- Type of Release : Microprocessor based, thermo-magnetic
- Residual Current protection - Optional
- Conforms to IS/IEC 60947-2.

Power of Technology



Contactors

Salient Features

- Widest Range of 3P & 4P Contactors upto 800A
- 4 Pole Control Contactor with option upto 12 contacts
- Capacitor Duty Contactors upto 62 kvar
- Highest Electrical Life upto 2.5 million operations
- Differential Bimetallic Overload Relays upto 800A
- Site mounted add on accessories (Auxiliary Contacts, Mechanical Interlock, Surge Suppressor, Timer, Mechanical Latch Units)
- Conformity to latest IEC/IS Standards
- Type II Co-ordination
- CE marked & UL Certified



Thermal Overload Relays

Salient Features

- Differential Bimetallic overload relays from 0.1 to 800A
- Built in 1No+1NC potential free contacts
- Choice of Contactor or separate Mounting
- Option of Manual / Auto or Remote Reset
- Sealable cover to avoid tampering
- Trip indicator
- Class 10A or Class 20
- Site Mounted add on accessories



new Motor Protection Circuit Breakers (Motocop)

Salient Features

- Wide range of MPCB from 0.1 to 63A
- 22 Ratings in just 2 frames
- Rotary Type Operation (Direct & Extended Handle)
- Protection against O/L, S/C & Single Phasing
- Higher Breaking capacity upto 50kA, 480 VAC
- Electrical / Mechanical Life - 1 Million Operations
- Suitable for Isolation & Type II Co-ordination
- Ambient Temperature Compensated
- Site Mounted add on accessories



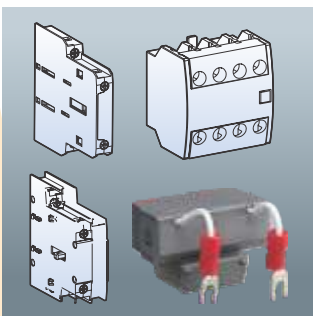
new **Submersible Pump Controller Panel**

Salient Features

- Range - 5HP to 60HP (Star Delta) in 2 Models (Deluxe & Standard)
- Control Voltage - 1 Phase (130 to 290V) or 3 Phase (280 to 440V)
- Short Circuit Protection - MCB/MCCB (10kA) in Deluxe Model
- Other Protections - Single Phasing / Over Load / Unbalance Voltages / Reversal of Phases
- Auto - Manual Bypass Switch
- Ammeter & Voltmeter with Selector Switch
- LED indications for R, Y, B Phases & Pump ON/OFF


Control Contactors
Salient Features

- Basic 4 Pole Unit
- AC & DC Control
- Add on Aux 2 & 4 Pole
- Ith(Continuous current) 16 Amp.
- DIN Rail or Screw Mounting


Add On Accessories
Salient Features

- Aux.Contacts(Side & Top Mounting)
- Mechanical Interlocking
- Surge Subprocessor Units
- Timer Units
- Safety Covers
- Mechanical Latch Units



HPL- On Load Changeover Switch

Salient Features

- Range : 63 - 3150A, 4 Pole, 415 V AC as per IS 13947 Part 3 / 93
- Compact Body of fibre glass, reinforced polyester resin
- Silver plated current carrying parts
- Entire range with single composite handle
- Flexibility for termination of supply
- Line Load reversibility
- Mounting possible in both horizontal & vertical position
- Available in Open Execution / Sheet Steel enclosure
- Auxiliary contacts upto 2 NO. NC.
- Bolt holders for easy installation



HPL- Switch Fuse Changeover

Salient Features

- Range : 125A - 630A, 4 Pole, 415V AC as per IS 13947 Part 3 / 93
- Body of fiber glass reinforced polyester resin
- Auxiliary contact upto 2 NO. 2 NC.
- Quick make and quick break mechanism
- Protection against over current and short circuit faults by fuses of high rupturing capacity of 80kA rms
- Bolt holders for easy installation



HPL- On Load Bypass Switch

Salient Features

- Range : 125A - 1600A, 4 Pole, 415 V AC as per IS 13947 Part 3 / 93
- Switch is designed for specific need in IT industries where UPS and Servo stabilizer provides main source of supply
- Auxiliary contacts upto 2 NO. NC.
- Bolt holders for easy installation



Cubicle Load Break Switch

Salient Features

- Range : 63A - 3150A, 4 Pole, 415V, AC as per IS 13947 Part 3 / 93
- Compact design
- Quick make & Quick Break mechanism
- Unique safety handle with door pad locking
- Auxiliary contacts upto 2NO. 2NC.
- Suitable for DC-23A, 260V, application without any derating
- Available in open execution and sheet steel enclosure
- Bolt holders for easy installation



LK - HPL Switch Disconnecter Fuse

Salient Features

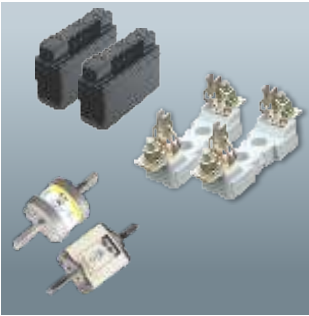
- Range : 32A to 800A, TP, TPN & 4 Pole, 415V, 50Hz
- Conforms to latest IS 13947-3 / IEC 947-3
- Tested at CPRI, Bhopal for AC-23A duty
- Multiple Roller Contact Mechanism for long life and better performance
- Available in open execution and sheet steel enclosure
- Available in BS & DIN type HRC fuse links
- Excellent performance for capacitor duty applications also.



Off Load Changeover Switch

Salient Features

- Changeover Switches : 16 Amps to 2000 Amps (Available in DP & FP)
- Tested at International Accredited Independent Laboratory
- Approved by major PSUs & Utilities
- Conforms to IEC : 60947-3



HPL - HRC Fuse Link & Base-BS & DIN Type

Salient Features

- Range (DIN type - Fuse Link & Base) : 2 Amps to 630 Amps
- Range (BS Type Fuse Holder) : 20A to 125A
- Breaking capacity >80kA at 415V, AC, 50 Hz
- Front & Busbar Connection options for fuse Holders (of BS type).
- Conforms to IS : 13703 / 93 & IEC 269-1986
- Low Watt loss
- Tested at CPRI Bhopal



Fuse Unit (Kit-Kat) in porcelain

Salient Features

- Conforms to IS : 2086, 1993
- Rating : 16A to 320A (240V & 415V)
- Choice of Rewirable / HRC fuses.



new

HPL *bsafe* MCB

Salient Features

- Range : 0.5Amp - 125 Amp in SP, SPN, DP, TP, TPN, FP
- Specification : IS/IEC-60898-1
- Rated Voltage : 240/415V AC, 50Hz
- Rated Breaking capacity 10kA & Energy Limit Class 3
- Installation and removal of MCB without removing Busbar, as 3 position mounting clip makes it possible
- Bi-connect termination on both sides & snap fitting on accessories
- Contact position indicator (Red-Green)
- Padlock/Sealing facility : Contact position indicator red/green
- Cable termination capacity of wire upto 35sqmm
- Can be sealed with leads in the ON or OFF position



HPL Techno MCB

Salient Features

- Range : 0.5 to 80 Amps 240/415V, AC
- Available in SP, SPN, DP, TP, TPN & FP
- Breaking capacity 10kA
- Insulation voltage : 660V, frequency : 50/60Hz
- Finger Touch proof (IP20)
- Mid trip facility
- Protection against Short Circuit & Over Load
- Low let through energy & low watt loss
- Energy limiting class 3
- Trip free mechanism
- Available in B, C & D Curve
- Accessories :UV, Shunt trip, Auxiliary contact
- DC MCB available in SP & DP
- DC MCB voltage : 12V to 220V



Entire Range
 IS 8828

 Certified by BIS as per
 IS 8828/IEC 898 & CE certified



HPL Techno Isolator

Salient Features

- Range : 40, 63, 100 & 125 Amps
- Conforms to IS 13947-3
- Available in 2 P, 3P & 4 P version
- Finger touch proof (IP-20)



HPL Techno RCCB

Salient Features

- Range: 25 - 80Amp, 2 Pole & 4 Pole Version
- Sensitivity: 30mA, 100mA, 300mA
- Conforms to IEC / EN: 61008 & IS:12640
- Dedicated earth leakage protection.
- Voltage Rating 240/415V (AC), 50Hz.
- Protection against Electrocution, Short Circuit & Electrical fire
- Consistent performance, Compact & Space saving
- Auxiliary Switch optional



HPL Automatic Changeover with Current Limiter (ACCL)

Salient Features

- Range : 0.6Amp - 10Amp in SPN.
- Specification : IEC - 60947-6-1.
- Rated Voltage : 240/415V AC, 50Hz.
- Microcontroller based DIN rail mountable with neutral Isolation.
- Inbuilt SMPS for low power consumption.
- Operational status indication through LED.
- Automatic generator on/off facility.
- Built-in time delay for fall safe changeover.



HPL Techno Changeover Switch

Salient Features

- Range : 25A, 40A, 63A
- Conforms to IS:13947/Part III , IEC:60947 - III
- Choice of 2 Pole & 4 Pole versions
- Voltage Rating 240/415V (AC), 50Hz.
- Front Operation with three stable positions I-O-II
- Isolator at middle position
- DIN Rail Mountain facility



MCB Plastic Enclosure

Salient Features

- Made from High Grade.
- Available in both 1/ 2 pole and 3/ 4 pole models.
- Suitable for all types of MCBs.

new



New Distribution Board

Salient Features

- Available in SPN and TPN versions
- Compact and aesthetically designed to meet the requirement of high end customer
- Intelligently designed to provide the maximum space for wiring of Db's
- Mounting of MCB's on Height adjustable DIN Channel
- Available with Cement Guard Protection
- Available in All New Packing



Distribution Systems Single Door

Salient Features

- SPN & TPN Versions.
- Distribution Systems in 4 to 16 ways
- Aesthetically designed
- Fitted with DIN channel, Bus Bar, Neutral Link Bar, Earth Bar, Inter connecting cables with copper thimble
- Can be mounted on surface / flush



Distribution Systems Double Door

Salient Features

- User friendly, Aesthetically designed, available in EX & DX series Distribution Systems in 4 to 16 ways
- SPN & TPN Versions.
- Bus Bar rating up to 200 Amp
- Fitted with DIN channel, Bus Bar, Neutral Link Bar, Earth Bar, Inter connecting cables with copper thimble
- Complete range of DB's with Double punched knockout to facilitate different size cable glands
- TPN DB's fitted with detachable gland plates at the Top & Bottom with double knock-out
- Double Door DB's in flush mounted design



Consumer Unit - Double Door

Salient Features

- Aesthetically designed Single phase distribution systems
- Painted with the latest powder coating technology for long lasting surface finish
- Available with transparent plastic cover



HPL Vertical Distribution Systems

Salient Features

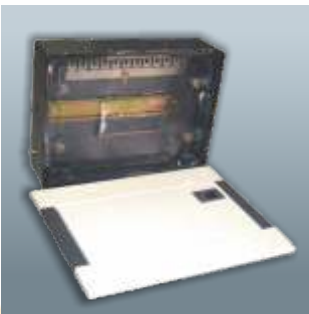
- Aesthetically designed, good looking & superior DB's with latest style
- Fitted with Bus Bar, Shorting Links, Neutral Bar & Earth Bar
- Compact design having complete shrouding all over the inter connecting links
- With provision of ELCB along with TPN/FP Isolator as incomer
- Suitable to use as SP/DP/TP/TPN outgoing
- Available with MCCB as incomer
- Available in Single Door & Double Door



HPL Phase Selector Distribution Systems

Salient Features

- Compact distribution system
- Convenient mounting and operation
- Flexibility to use MCB's and ELCB/ELMCB
- Fitted with : DIN channel Bus Bar NL bar 3 Nos.
- Phase changeover switches duly wired (except for MCB's and ELCB's)



Distribution System with Cement Guard

Salient Features

- Available in Single & Double Door DX Distribution Systems
- Distribution Systems in 4 to 16 ways
- Aesthetically designed
- Fitted with DIN channel, Bus Bar, NL Bar, Earth Bar,
- Inter connecting cables with copper thimble
- Can be mounted on surface / flush



HPL Plug & Socket Distribution Systems

Salient Features

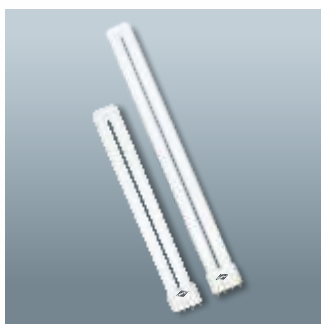
- Range : SP - 10 - 20 A
 : TP - 20 - 30 A
- Provision for SP/SPN/DP/TP MCB
- Fitted with indicating light
- CRCA powder coated DB
- Elegant Flush mounting design



Non Retrofit (SU/DU/T4)

Salient Features

- Single ended 2 Pin G23/G-24d-1/G-24d-2 & G-24d-3 bases with integrated starter.
- Single ended 4 Pin 2G7/G24q base.
- Available in colours 6500, 4000 & 2700°K.
- Range in 5W, 7W, 9W, 10W, 11W, 13W, 18W & 26W.
- Applicable to dimmer operation.
- Can be connected to almost any kind of power supply.
- Slim and compact, fits in most standard & narrowest fixtures.
- Eight times more life than the normal GLS bulbs.
- High luminous efficacy and excellent colour rendering.



Non Retrofit (SU/T5)

Salient Features

- Single ended 4 Pin 2G11 base.
- Available in colours 6500, 4000 & 2700°K.
- Range in 18W & 36W.
- Applicable to dimmer operation.
- Can be connected to almost any kind of power supply.
- Eight times more life than the normal GLS bulbs.
- High luminous efficacy and excellent colour rendering.



Regular Retrofit (T4)

Salient Features

- Compact lamp with inbuilt electronic control gear.
- Single ended with B22d & E27 bases.
- Available in colours 6500, 4000 & 2700°K.
- Range in 11W, 15W, 20W, 23W, 25W, 27W, 30W & 35W
- Ideal replacement for normal GLS bulb.
- Flicker free instant start.
- Six times more life than the normal GLS bulb.
- High luminous efficacy and excellent colour rendering.



Mini Retrofit (T3)

Salient Features

- Super compact lamp with inbuilt electronic control gear.
- Single ended with B22d, E27 & E14 bases.
- Available in colours 6500, 4000 & 2700°K.
- Range in 5W, 8W, 11W, & 14W
- Ideal replacement for normal GLS bulb.
- Flicker free instant start.
- Six times more life than the normal GLS bulb.
- Fits in to the most compact Down & Up lights.
- High luminous efficacy and excellent colour rendering.



Spiral Retrofit (T4)

Salient Features

- Compact lamp with inbuilt electronic control gear.
- Excellent light distribution.
- Single ended with B22d & E27 bases.
- Available in colours 6500, 4000 & 2700°K.
- Range in 15W, 20W, 23W, 25W, 27W, 30W & 35W
- Ideal replacement for normal GLS bulb.
- Flicker free instant start.
- Six times more life than the normal GLS bulb.
- High luminous efficacy and excellent colour rendering.



Mini Spiral Retrofit (T3)

Salient Features

- Super compact lamp with inbuilt electronic control gear.
- Excellent light distribution.
- Single ended with B22d, E27 & E14 bases.
- Available in colours 6500, 4000 & 2700°K.
- Range in 7W, 9W, 11W & 15W.
- Ideal replacement for normal GLS bulb.
- Flicker free instant start.
- Six times more life than the normal GLS bulb.
- Fits in to the most compact Down & Up lights.
- High luminous efficacy and excellent colour rendering.



G 24 Lamps

Salient Features

- Single ended 2 pin G24 with in build electronic control gear
- Available in colors 6500 & 2700 °k.
- Range in 11W, 15W in four U and 15W, 18W in Spiral
- Applicable to dimmer operation
- Compact lamps fits in most standard fixtures
- High Luminous efficacy and excellent color rendering



Higher Wattage Regular/Spiral Retrofit (T5)

Salient Features

- High Power Factor ≥ 0.9 .
- Compact lamp with inbuilt electronic control gear.
- Single ended four tube, with B22d, E27 & E40 bases.
- Available in colours 6500, 4000 & 2700°K.
- Range in 45W, 65W & 85W (in both 4U & Spiral).
- Flicker free instant start.
- Six times more life than the normal GLS bulb.
- High luminous efficacy and excellent colour rendering.



Candle (CFL)

Salient Features

- Safety parameter : (As per IEC 60968)
- Interchangeability : Confirms Interchangeability to Standard GO – NO GO Gauges
- Protection against Electric shock : Self ballasted lamp is so constructed that no external part becomes live.
- Cap Temperature Rise : Cap temperature rise <125K
- Resistance to flame & ignition : Confirms to 650°C Glow Wire Test as per IEC 60968
- CFL Life : 6,000 hrs
- Lamp Holder : B22d Cap-3 Nm



Globe (CFL)

Salient Features

- Safety parameter : (As per IEC 60968)
- Interchangeability : Confirms Interchangeability to Standard GO – NO GO Gauges
- Protection against Electric shock : Self ballasted lamp is so constructed that no external part becomes live.
- Cap Temperature Rise : Cap temperature rise <125K
- Resistance to flame & ignition : Confirms to 650°C Glow Wire Test as per IEC 60968
- CFL Life : 6,000 hrs
- Lamp Holder : B22d Cap-3 Nm



LED GLO

Salient Features

- Range available : 4W, 6W, 9W & 12W
- Colour Available : Warm White & Cool White
- Mercury Free and Hazardous Materials
- High Brightness
- Upto 85% Energy Saving Compared with GLS Lamp



LED Ball / Candle

Salient Features

- B22 & E27 base
- Available in color 6500 & 2700°k.
- Range in 1.5W in Ball, 2.5W & 3.5W (both in Ball & Candle)
- Ideal for general lighting
- Flicker free, Instant Start
- Life upto 25000 burning hours.

Consumer Lighting



new

Aries LED

Salient Features

- Available in Range : 7W, 12W & 20W
- LED Lumen efficacy is > 130 Lm / W
- Upto 30% energy saving, compare to T5 FTL
- Available in 2700K, 4000K & 6500K
- Decorative end Caps.
- Aluminum Housing



new

ONYX LED

Salient Features

- Available in 6W, 8W, 12W, 15W, 18W & 22W
- High quality polycarbonate housing
- Color Temperature 6000K/7000K
- Short Circuit & Open Circuit Protection On Driver.
- Highly Efficient Constant Current Led Drivers
- Diffused Light With Acrylic Pc.
- Instant light with low running temperatures



Decorative Luminaries

Salient Features

- Surface and recessed mounted decorative fixture fitted with energy efficient lamps.
- Engineering plastic housing white in color .
- Fitted with opaque diffuser for diffused light and with Poly carbonate colored ring to enhance aesthetics.
- Used in offices, balconies, corridors etc.

Industrial Luminaries



Legacy Plus & Storm

Salient Features

- Box type batten suitable for T5 and T8/12 FTL.
- Available in Electronic and Magnetic Ballast
- Also available in powder coated reflector.
- Suitable for Wall, Ceiling and suspended type of mounting.

Commercial Lighting



Mirror optics

Salient Features

- Recess and Surface mounted mirror optics suitable for T5, T8 and FP-L lamps.
- Fitted with high purity pre anodized aluminum reflector for better light control.
- Provided with HPF electronic and magnetic ballast.
- Housing made up of CRCA sheet metal, epoxy powder coated white finishing.
- Used in Offices, auditorium & showrooms etc.



LED Matrix

Salient Features

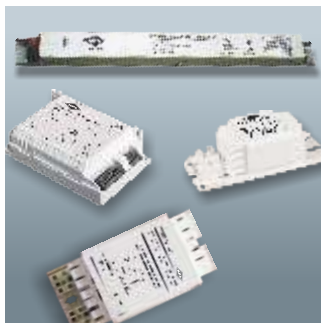
- Available in Range : 6W, 12W & 18W
- High Quality Poly carbonate housing
- Short Circuit and open Cricuit protection on driver
- Diffuse Light with Acrylic PC



Chromium

Salient Features

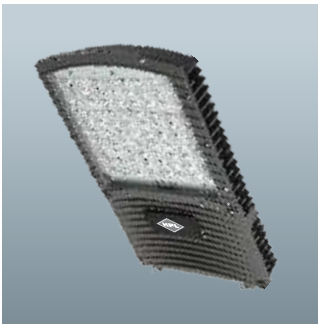
- Recess and surface mounted downlighters suitable for Retro and Non- Retrofit CFL lamps.
- High purity aluminum reflector electrochemically brightened & anodized specially profiled.
- Available with HPF electronic and magnetic ballast .
- Available in Pressure die cast Aluminium and CRCA sheet metal, epoxy powder coated white finishing on ring and Black on housing.
- Used in Offices, Restaurants, showrooms & lobbies etc.



Accessories

Ballasts :

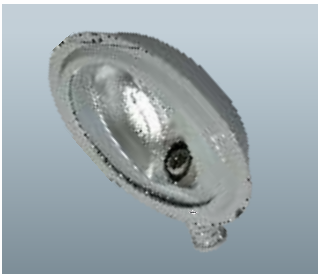
- Electromagnetic Ballast (Copper wound open construction ballast) The VPIT Magnetic Ballasts are available for Compact Fluorescent Lamps (CFL) ranging from 9W to 36W Fluorescent Tubular Lamp (FTL) ranging from 18W to 40W High pressure Sodium vapor lamp / metal Halide Lamp range from 70W to 400W.
- Electronic Ballast are available for CFL ranging from 9W to 36W & FTL ranging from 18W to 36W.



LED Street Light & LED Flood Light

Salient Features

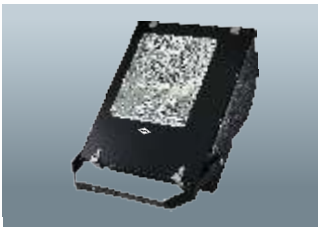
- Available voltages – 15W to 160W
- LED efficiency - > 130 lumen / watt
- Lamp life – 50,000 burning hours with L 70 criteria
- CRI > 80, PF > 0.95 THD < 10%
- Confirms LM 79 & LM 80
- Special Feature : Reverse EMI protection provided / over voltage protection upto 300V / surge protection upto 6kV.



Street Light MHL

Salient Features

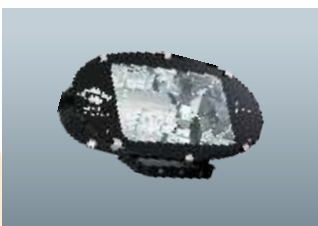
- Available in 70W, 150W, 250W & 400W.
- Single piece die cast Al. LM-6.
- Heat resistance toughened glass
- Confirm IP-66.
- Applications: Airport, Approach Roads, A1, A2 Classifications Roads etc.



Flood Light

Salient Features

- Available in 70W, 150W, 250W & 400W MH/SV lamp.
- Pressure dia cast Al LM-6.
- Tempered protective toughened glass.
- Confirm IP-65.
- Application : Construction site, Industrial Area & Parks etc.



Flood Light

Salient Features

- Available in 2x250W & 2x400W MH/SV lamp.
- Pressure dia cast Al LM-6.
- Tempered protective toughened glass.
- Confirm IP-65.
- Applications : High Mask, Stadiums & Industrial Area etc.



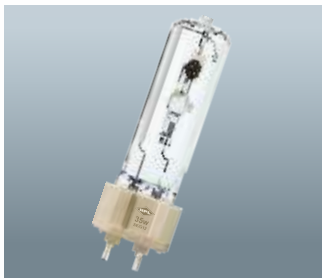
T5 Street Light

Salient Features

- Single piece deep drawn Al. Sheet
- Acrylic cover UV stabilized with rubber gasket fitted with toggle.
- Available in 2x14, 4x14, 2x24 & 4x24.
- Immediate start without flickering with HPF electronics Ballast.

Metal Halide Lamps

MH lamps are available in Double Ended & Single Ended versions. Double ended lamps are available in 70w & 150w. Single Ended lamps are available in Elliptical (ranging from 70w to 400w) & Tubular version (ranging from 35w to 400w). These lamps offers efficacy upto 80-85 lumens / watt.



G12 Single Ended, 35, 70,150W

Salient Features

- UV Shield
- Better Colour Rendering
- Longer Life
- Highly Efficient
- Precise optical control



Double Ended, 70,150W

Salient Features

- UV Shield
- Better Colour Rendering
- Longer Life
- Highly Efficient
- Precise optical control
- Faster Warm up & Hot
- Re-strike



Single Ended-Elliptical, 70,150, 250, 400W

Salient Features

- UV Shield
- Better Colour Rendering
- Better Cold Starting
- Superior Lumen Maintenance
- Faster Warmup & Hot
- Re-strike



Single Ended-Tubular, 70,150, 250, 400W

Salient Features

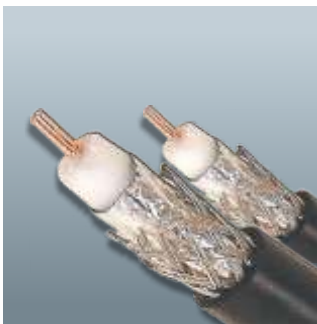
- UV Shield
- Better Colour Rendering
- Better Cold Starting
- Superior Lumen Maintenance
- Faster Warmup & Hot
- Re-strike



Domestic & Industrial Wire

Salient Features

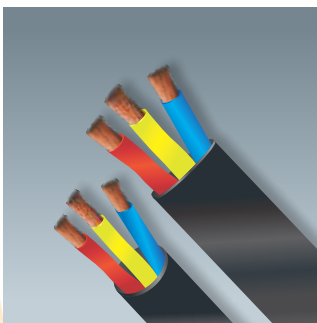
- Range : 0.5 to 400 Sq. mm in Single Core & Multicore Available in FR / FRLS / HR / ZHFR insulation
- Conforms to IS 694/1990
- Multi strand 100% Pure annealed Electrolytic copper conductor
- Bunching of copper in uniform lay & diameter
- High insulation Resistance
- Double insulation with ultra thin layer



Co-axial Cable

Salient Features

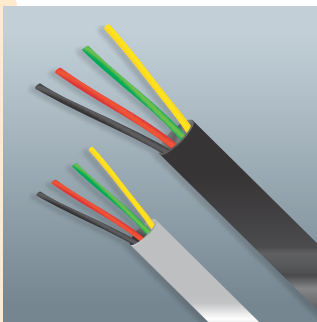
- Range : RG-59, RG-6, RG-11
- Solid / Stranded bare annealed electrolytic grade copper
- PE foam and solid
- Copper ABC / ATC Wire braiding / aluminum foiling / taping
- Specially formulated PVC
- RG and UR series BS : 2316 / MIL-C-17



Submersible Cable

Salient Features

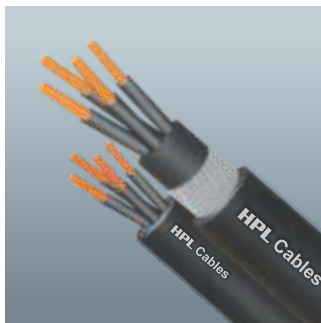
- Range : 1.0 to 95.0 Sq. mm three core flat cable.
- Stranded bare annealed electrolytic grade copper conductor
- Specially formulated PVC compound (Type A & ST-1)
- Round submersible cable can be specially asked for
- Conforms to IS 694/1990



Telephone Cable

Salient Features

- Range : 0.45 / 0.5 / 0.6 / 0.7 / 0.8 / 0.9 mm dia conductors available up to 50 pairs.
- Bare / tinned annealed copper Conductor PVC / PE Insulated
- Individual / Overall Shielded with aluminium tape (Polyester backed)/ Melinex Tape
- TEC Specification G/WIR 06/02.



Control Cable

Salient Features

- Range : 1.5 & 2.5 Sq. mm upto 61 Core, 1100 Volt Grade conforming to IS 1554(Part-I)/1988 & IS 7098 (Part-I) / 1988.
- Solid/ Stranded 100% pure annealed Electrolytic copper conductor.
- Insulation PVC/XLPE/HR
- Armourd/ Unarmourd- GI Round wire/Flat Strip.
- Outer Sheath PVC (ST-I) /FRLS/HR/ ZHFR.
- Heavy Duty Performance.
- Best combination safety.
- Efficiency & economy.
- Use in Process Control, Communication and Panel control.



Instrumentation Cable

Salient Features

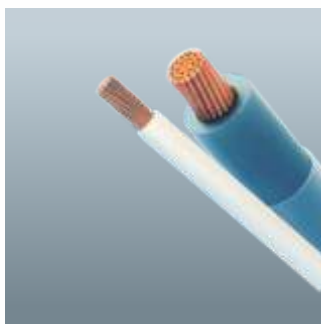
- Range : 0.5 Sq. mm to 2.5 Sq. mm Conforming BS 5308-I & II
- Shielding: Core/Pair/Triad/Quads.
- Armourd / Unarmourd.
- ABC/ATC,Solid/Standard 100% pure annealed Electrolytic copper conductor.
- Low attenuation and cross talk.
- Low structural return loss.
- High speed performance.
- For Analog & Digital Signals.
- High transmission Reliability.
- Use in Digital Control, measuring & Communication systems.



Networking Data Cable (CAT - 5e & 6e)

Salient Features

- Range : 4-Pair UTP CAT-5e and CAT-6e Cable.
- Solid 100% pure annealed Electrolytic copper conductor.
- Low attenuation and cross talk.
- Low structural return loss.
- High speed performance.
- Gigabite Ethernet
- Suitable for Voice, Data, Video.
- 100 ohm impedance cable.



Submersible Winding Wire

Salient Features

- Range : 0.40mm to 3.00mm
- Solid / Stranded Copper Conductor
- 100% pure annealed Electrolytic copper conductor
- HR PVC insulated
- Use for submersible pump Motors
- As per IS : 8783 (Part 4 / Sec-I) : 1985



Modular Switch

6A/10A/20A/32A- DP switch

Salient Features

- ROHS Compliance
- Captive Screws
- Dual Protection for spark shield
- High Grade Flame Retardant Engineering Plastic
- Silver Nickel contacts for trouble free operations



Socket

6A-5 Pin / 6A-2 Pin & 6-16A Pin Sockets
10-13A Universal Sockets

Salient Features

- Hardened Phosphorus bronze contacts
- High Grade Flame Retardant Engineering Plastic
- Spring Loaded Protective safety shutter.



Controllers

Fan Regulators - 1 - 2 Module
Dimmer - 400w/600w/1000w

Salient Features

- No radio Frequency interference
- High Grade Flame Retardant Engineering Plastic
- Good Ventilation for proper heat dissipation
- Easy to remove and install
- No Humming noise.



Connectors

RJ-11,2-Line/4- Line/2 - Line twin jack
RJ - 45/RJ-45 Cat -6/Audio- DVD / Television Socket

Salient Features

- Contact Material Phosphorus Bronze
- Gold Plated
- User Friendly Shutters
- Easy to remove and install



Speciality Products

- Surge Protector
- Movement Detector Ceiling Mounted
- Motion Sensor Wall Mounted
- Remote Switch Standalone
- Universal Remote switch for lighting
- Energy Saving Switch



Smarters Accessories

- Spike Guard
- Extension Cord
- Remote Bells
- Batten / Angle Holder
- Multi Plugs
- Plug Tops 6A/16A
- International Travel Adaptors



Tuff (Solo Switch)

Salient Features

- Vo Grade engineering Plastic
- Tested upto 2 lakh operations

HPL Global Presence



HPL INDIA LTD.
HPL Electric & Power Pvt. Ltd.

1/21, Asaf Ali Road, New Delhi - 110 002 Ph.: 011-23234411, 23234811
Fax : 011-23232639 E-mail: gsm@hplindia.com

www.hplindia.com